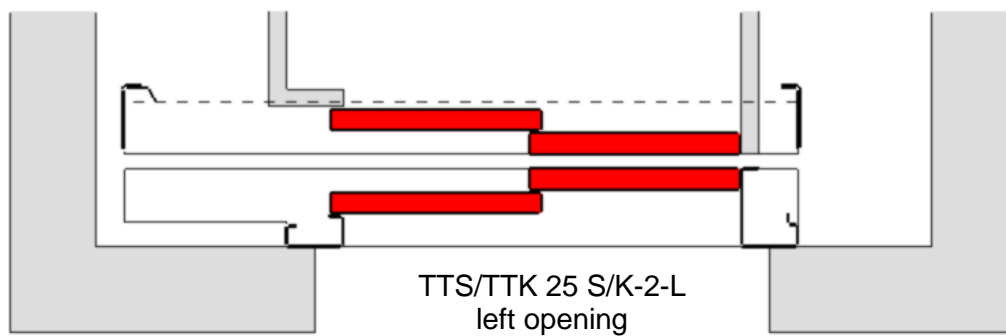
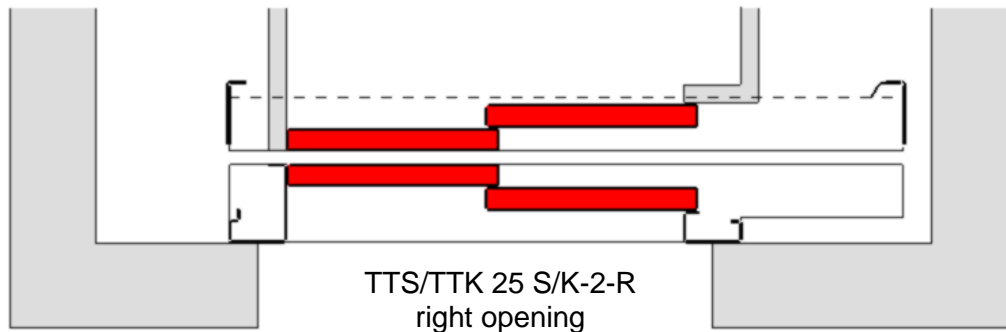
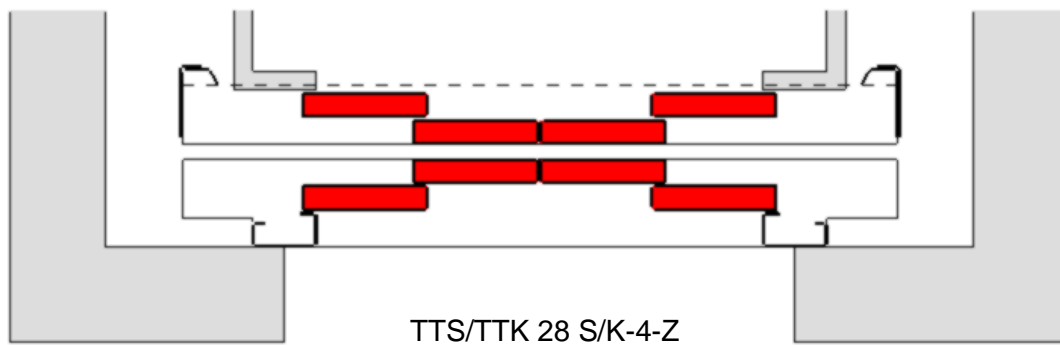


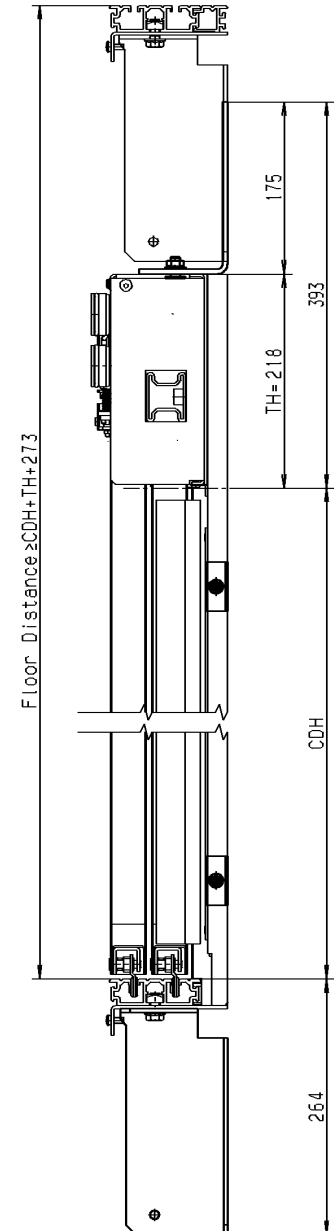
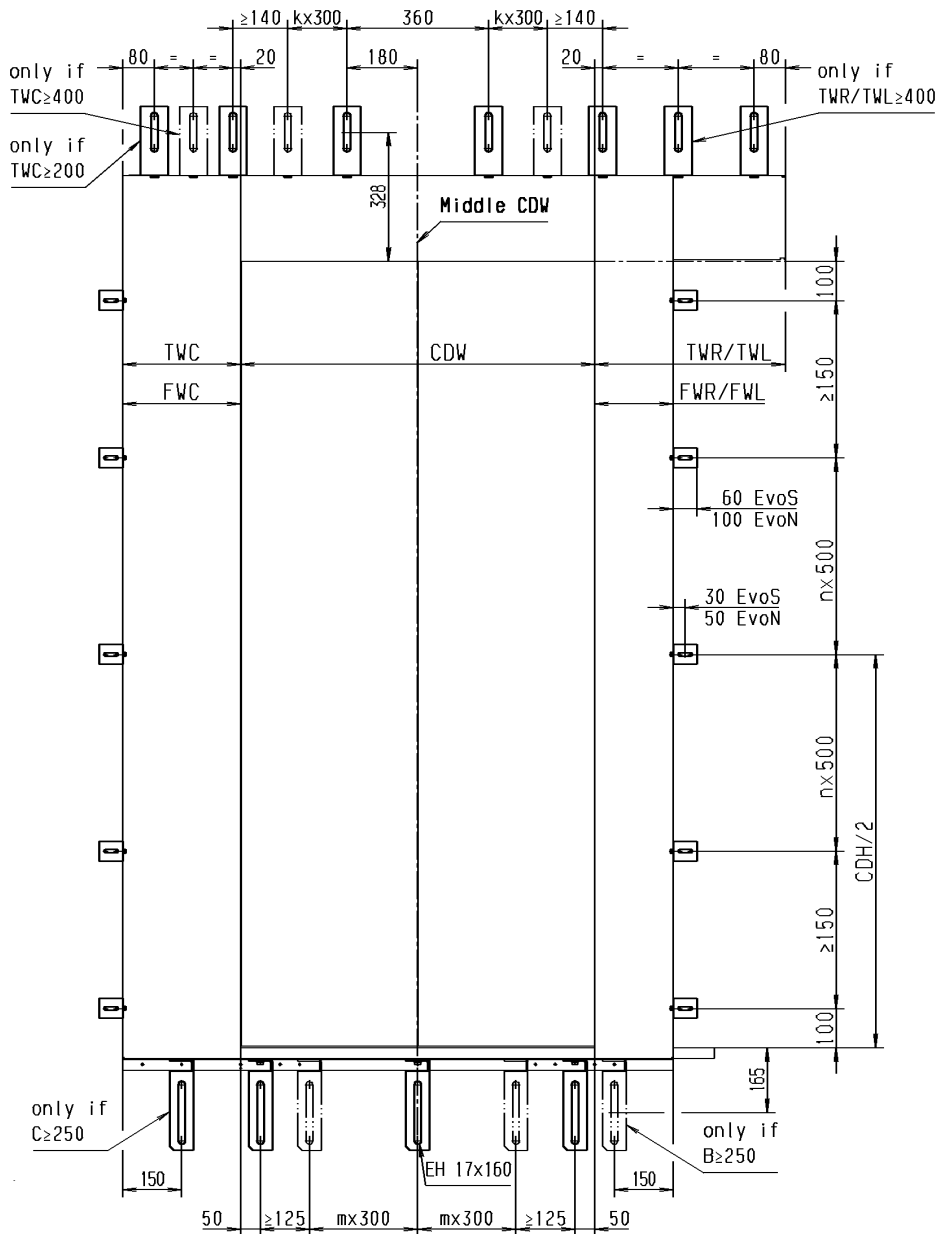
Door panel partitioning and opening direction  
side opening landing- and car doors



Door panel partitioning  
center opening landing- and car doors



### Mounting scheme for side opening landing door (TTS 25 S-2-R/L)



- CDH: Clear Door Height
- CDW: Clear Door Width
- TH: Transom Height
- FWC: Frame Width Closing Side
- TWC: Transom Width Closing Side
- FWR/FWL: Frame Width right/left
- TWR/TWL: Transom Width right/left

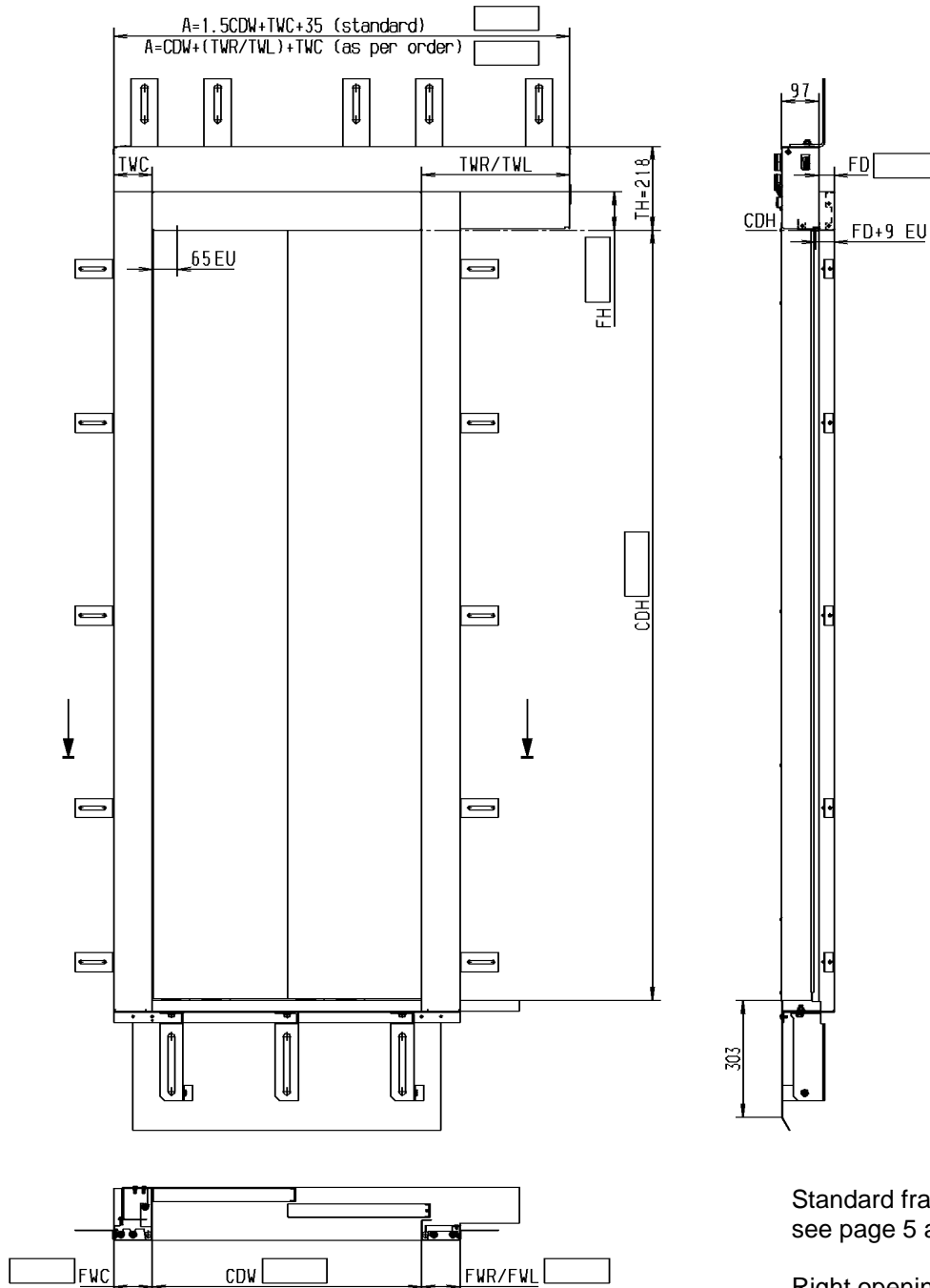
For sill angle in standard length  
C=FWC, and B=FWR or FWL depending on opening direction

For sill angle in transom width  
C=TWC, and B=TWR or TWL depending on Opening direction

Right opening as shown  
Mirror-image for left opening

Subject to alterations !

## Dimension sheet TTS 25 S-2-R/L



Standard frame dimensions  
see page 5 and page 6

Right opening as shown  
Mirror-image for left opening

\*if dimensions are not in accordance with DIN 18091, doors built in a similar design to DIN 18091

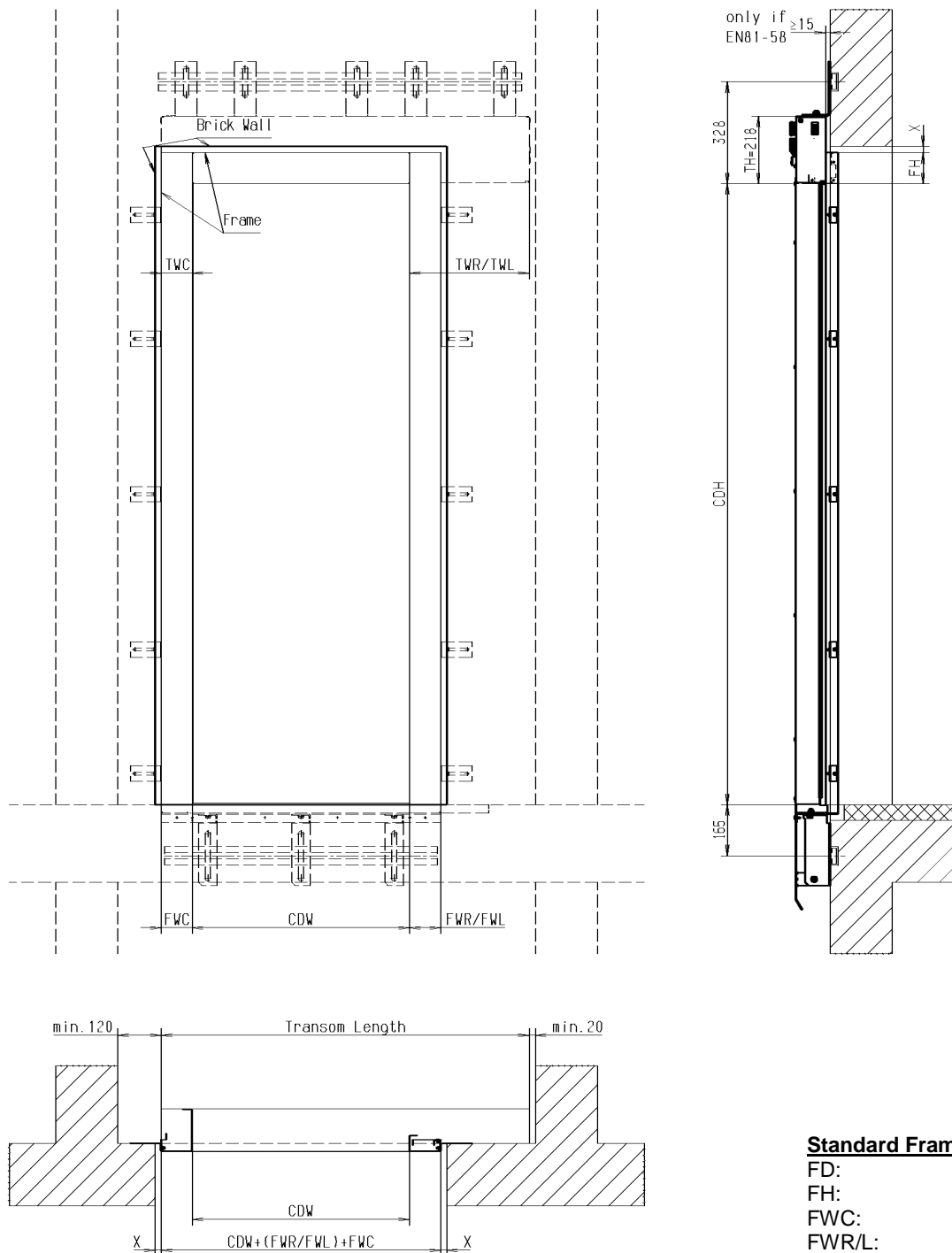
\*\*with reservations to special door types, designs and categories

EU: Emergency Unlocking

Subject to alterations!

		<u>acc. DIN18091*</u>	<u>acc. DIN18091 and EN81-58**</u>
CDW:	Clear Door Width	700 - 1400mm	700 - 1400mm
CDH:	Clear Door Height	2000 - 2300mm	2000 - 2300mm
FD:	Frame Depth	23 - 100mm	23 - 90mm
FH:	Frame Height	50 - 218mm	50 - 200mm
FWC:	Frame Width Closing Side	80 - TWC	80 - TWC
TWC:	Transom Width Closing Side	80 - 350mm	80 - 200mm
FWR/FWL:	Frame Width right/left	80 - TWR/TWL	80 - 200mm
TWR/TWL:	Transom Width right/left	CDW/2+35 - 1000mm	CDW/2+35

### Shaft wall cut out TTS 25 S-2-R/L EvoN



#### Standard Frame Dimensions

FD:	40mm
FH:	100mm
FWC:	100mm
FWR/L:	100mm

X = Assembly clearance  $\leq 20$ mm

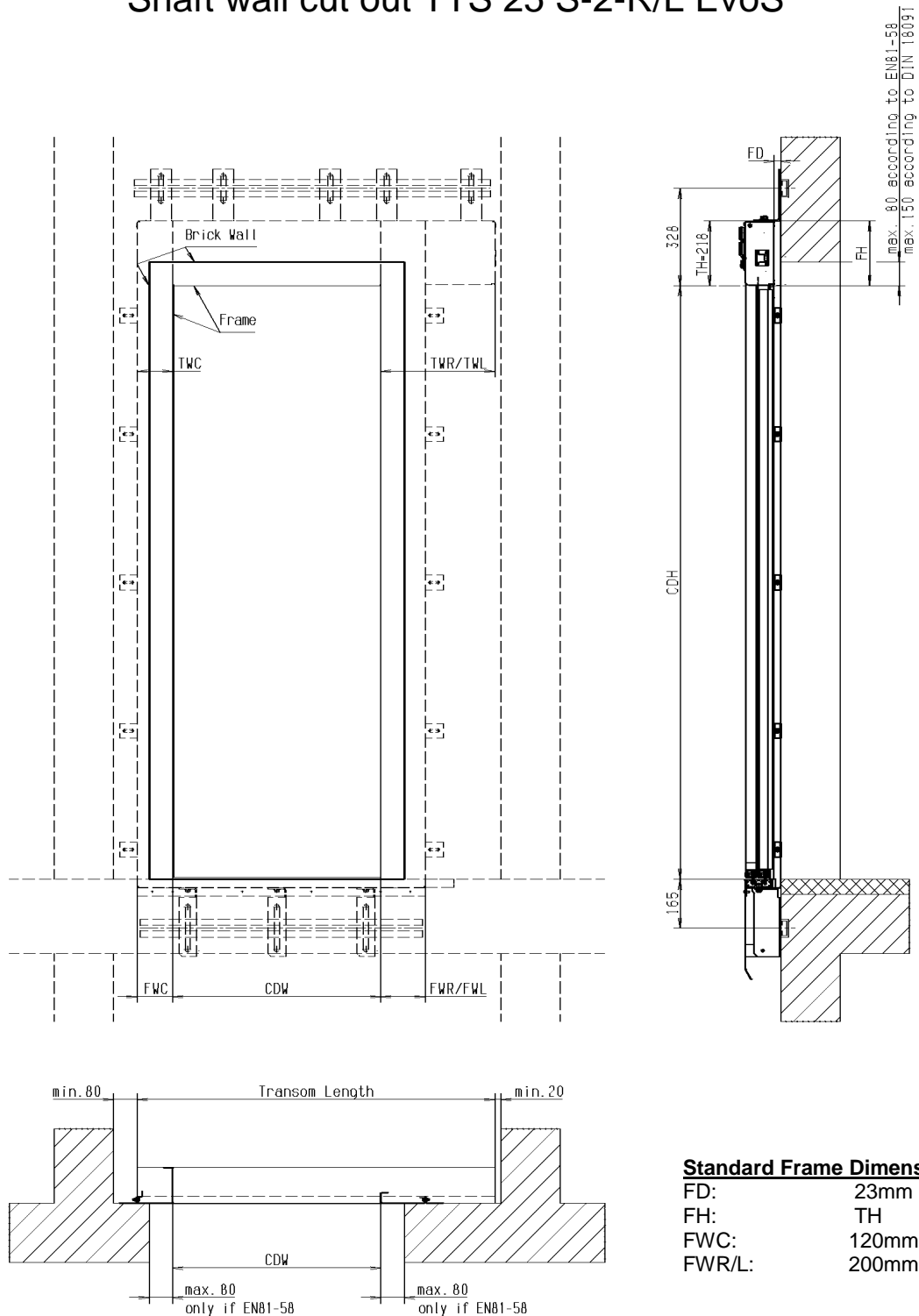
\*\* = dimensions only needed for optional fixing brackets on transom sidewalls (upon request)!

EN81-58: The connection joint between the door frame and the bordering shaft wall must be completely sealed around the whole joint using an approved construction material which is authorised within the country of use.

Wall anchors max. M16 (not included in scope of delivery)

Subject to alterations

## Shaft wall cut out TTS 25 S-2-R/L EvoS



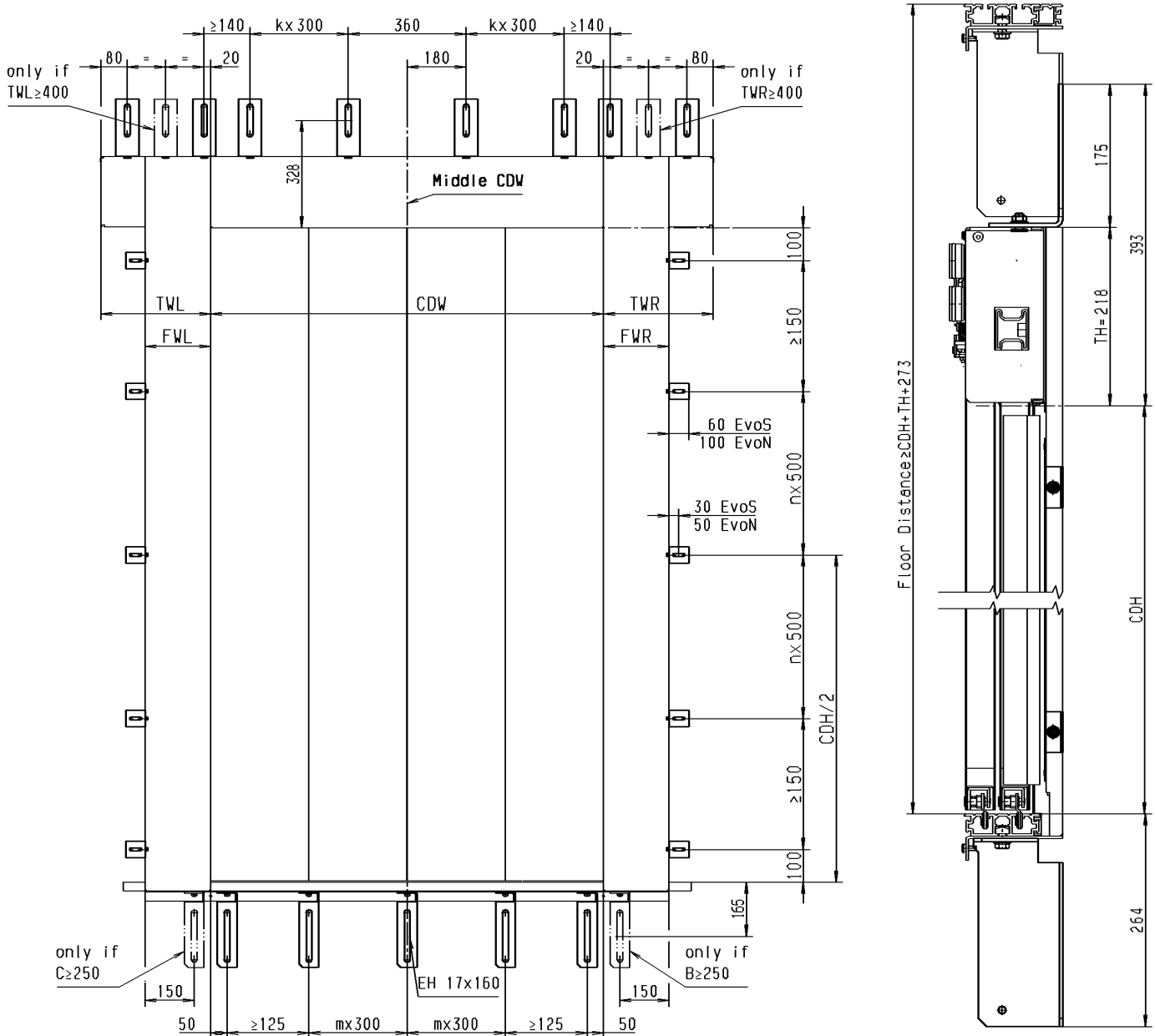
\*\* = dimensions only needed for optional fixing brackets on transom sidewalls (upon request)!

EN81-58: It must be ensured that the maximum protrusion of the frame sections into the clear wall opening is 80mm (see diagram). Should this not be the case, appropriate measures (e.g. walling up) must be undertaken to attain a maximum protrusion of 80mm. The connection joint between the door frame and the bordering shaft wall must be completely sealed around the whole joint using an approved construction material which is authorised within the country of use.

Wall anchors max. M16 (not included in scope of delivery)

Subject to alterations

### Mounting scheme for center opening landing door (TTS 28 S-4-Z)



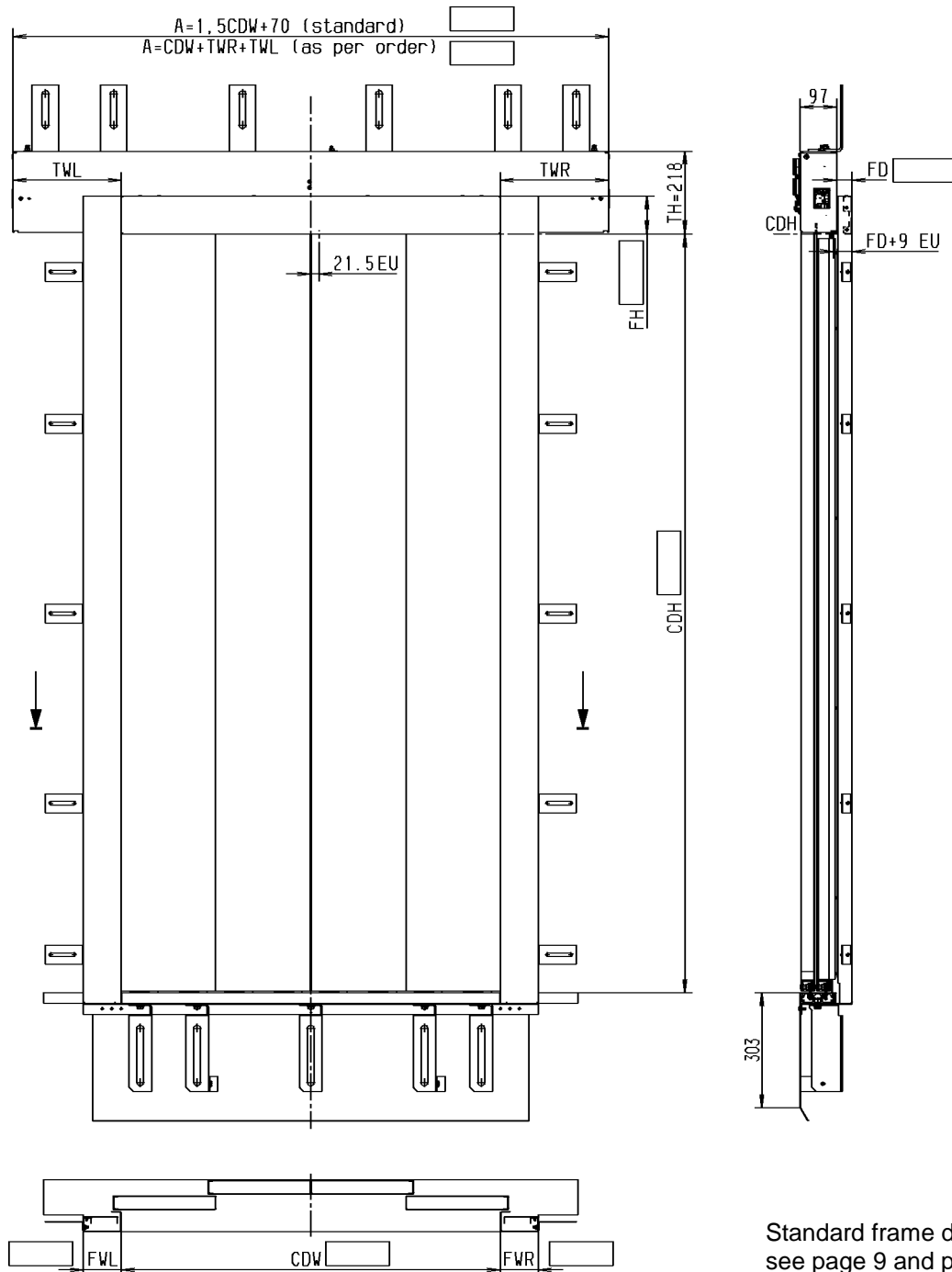
CDH: Clear Door Height  
 CDW: Clear Door Width  
 TH: Transom Height  
 FWR/FWL: Frame Width right/left  
 TWR/TWL: Transom Width right/left

For sill angle in standard length  
 $C = FWL$ , and  $B = FWR$

For sill angle in transom width  
 $C = TWL$ , and  $B = TWR$

Subject to alterations !

### Dimension sheet TTS 28 S-4-Z



Standard frame dimensions  
see page 9 and page 10

\* if dimensions are not in accordance with DIN 18091, doors built in a similar design to DIN 18091

\*\* with reservations to special door types, designs and categories

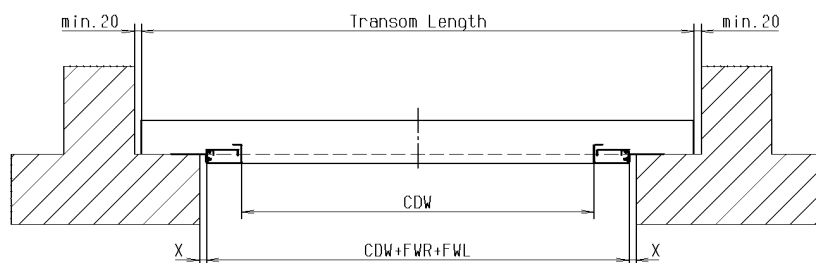
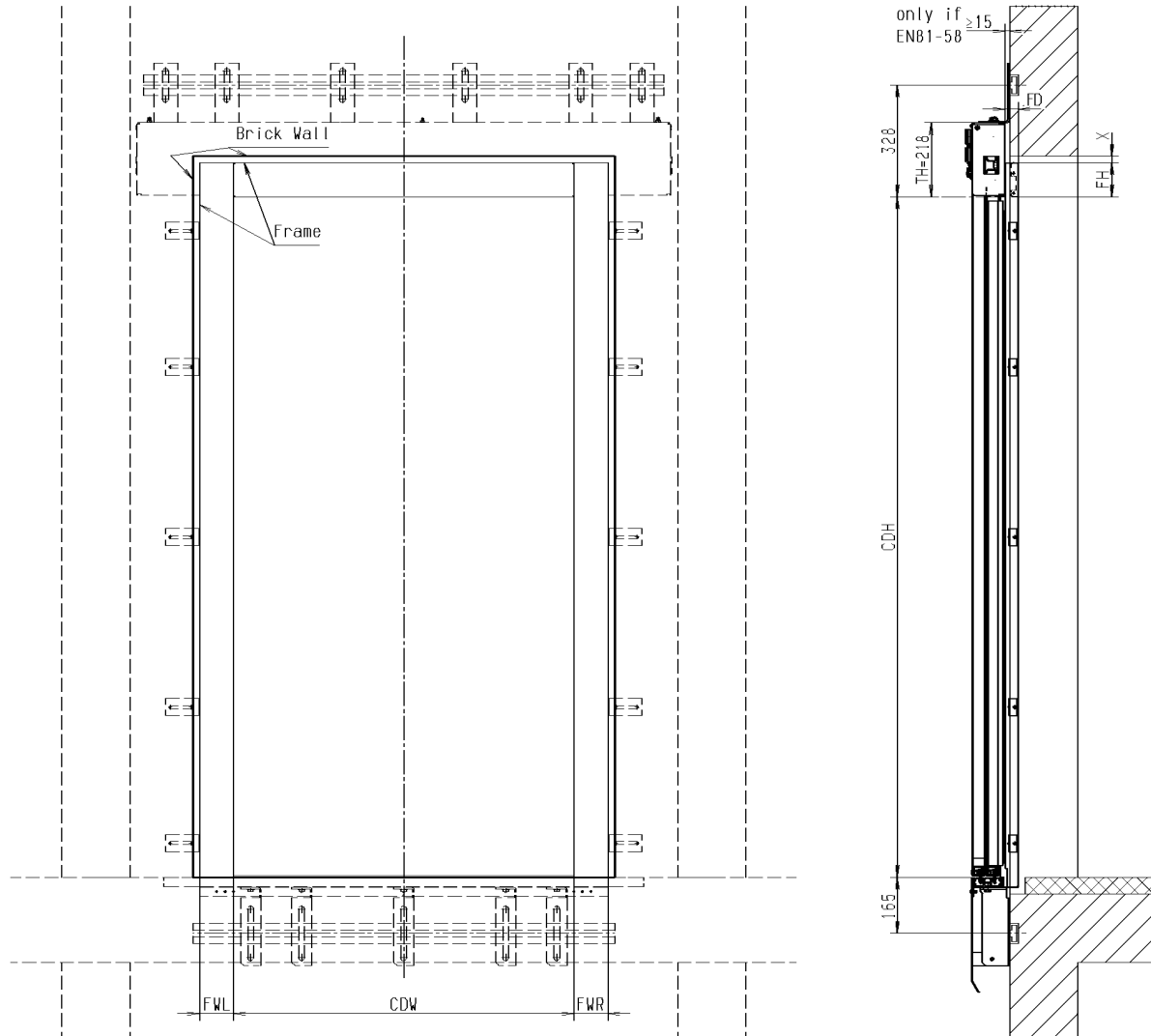
EU: Emergency Unlocking

Subject to alterations!

		<u>acc. DIN18091*</u>	<u>acc. DIN18091 and EN81-58**</u>
CDW:	Clear Door Width	1000 - 2400mm	1000 - 2400mm
CDH:	Clear Door Height	2000 - 2300mm	2000 - 2300mm
FD:	Frame Depth	23 - 100mm	23 - 90mm
FH:	Frame Height	80 - 218mm	80 - 200mm
FWR/FWL:	Frame Width right/left	80 - TWR/TWL	80 - 200mm
TWR/TWL:	Transom Width right/left	CDW/4+35 - 1000mm	CDW/4+35



## Shaft wall cut out TTS 28 S-4-Z EvoN



### Standard Frame Dimensions:

FD:	40mm
FH:	100mm
FWR/L:	100mm

X = Assembly clearance  $\leq 20\text{mm}$

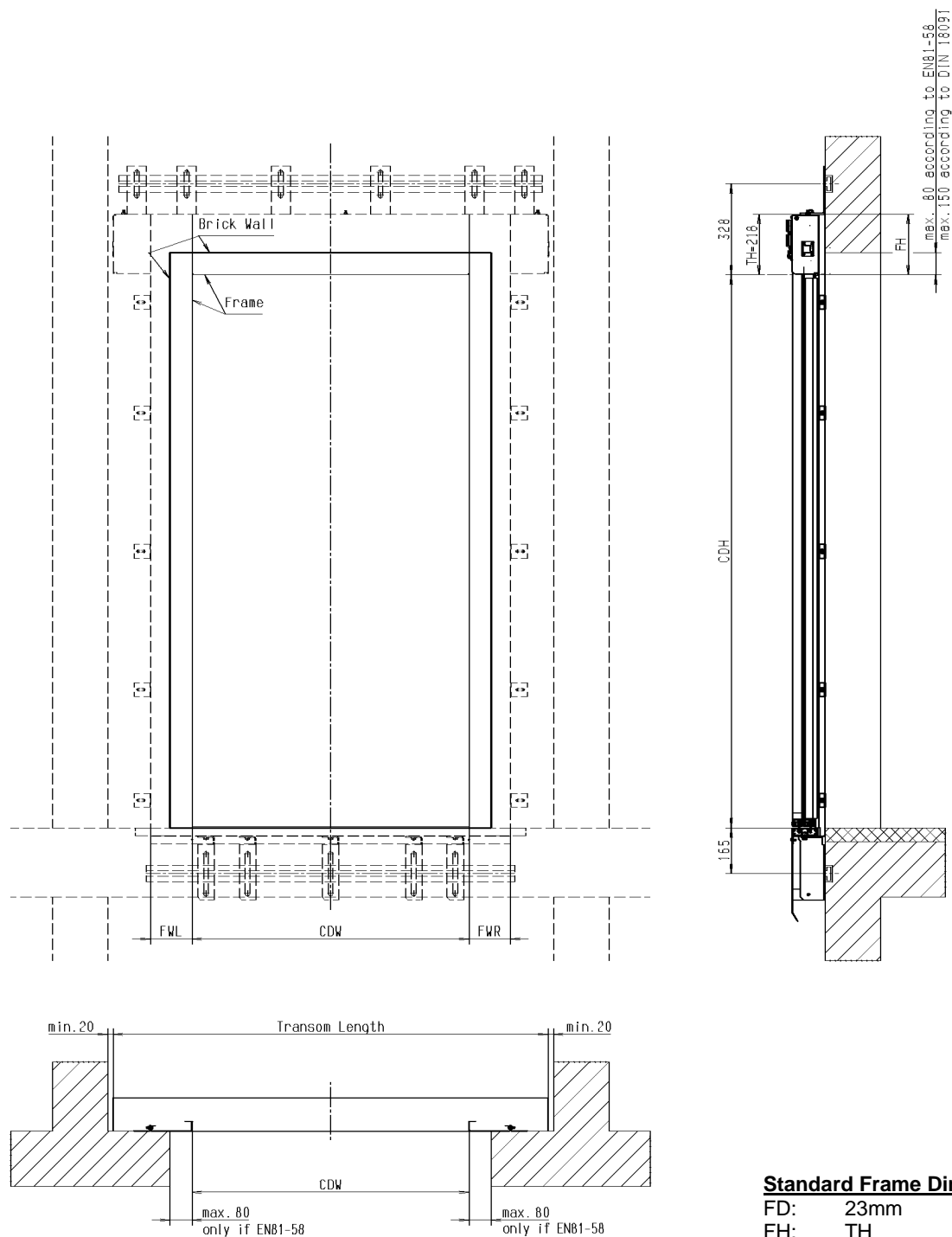
\*\* = dimensions only needed for optional fixing brackets on transom sidewalls (upon request)!

EN81-58: The connection joint between the door frame and the bordering shaft wall must be completely sealed around the whole joint using an approved construction material which is authorised within the country of use.

Wall anchors max. M16 (not included in scope of delivery)

Subject to alterations

### Shaft wall cut out TTS 28 S-4-Z EvoS



**Standard Frame Dimensions:**

FD: 23mm  
FH: TH  
FWR/L: 200mm

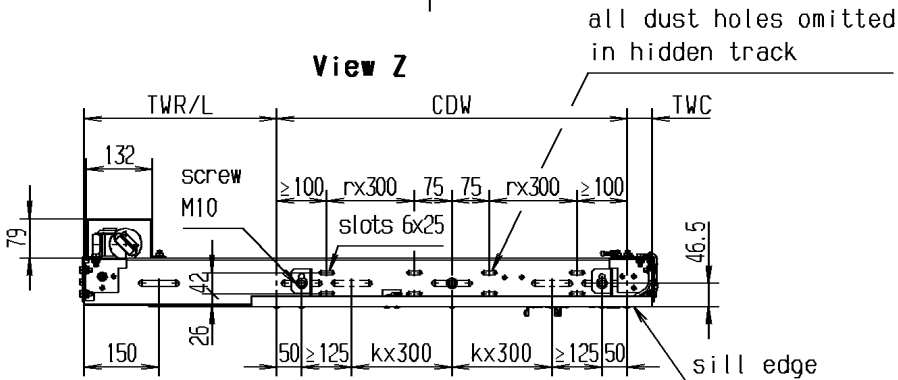
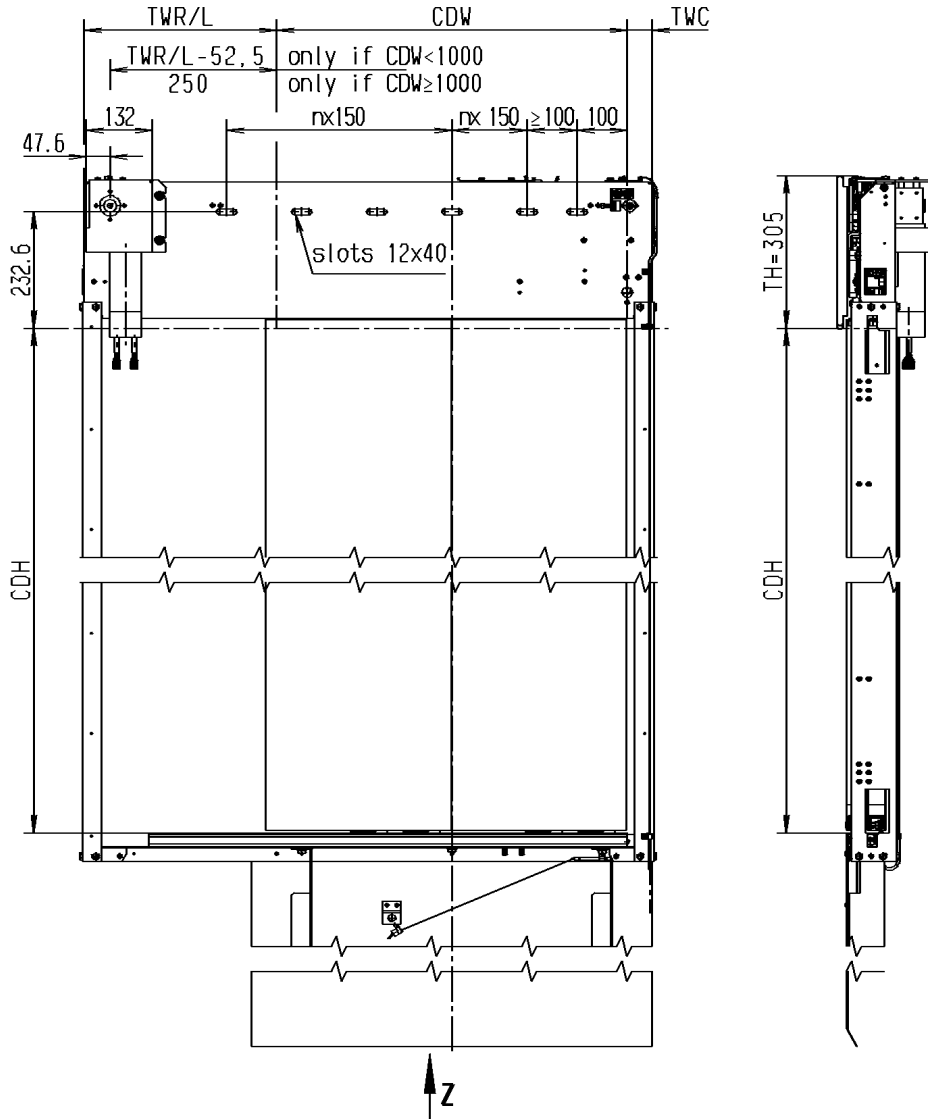
\*\* = dimensions only needed for optional fixing brackets on transom sidewalls (upon request)!

EN81-58: It must be ensured that the maximum protrusion of the frame sections into the clear wall opening is 80mm (see diagram). Should this not be the case, appropriate measures (e.g. walling up) must be undertaken to attain a maximum protrusion of 80mm. The connection joint between the door frame and the bordering shaft wall must be completely sealed around the whole joint using an approved construction material which is authorised within the country of use.

Wall anchors max. M16 (not included in scope of delivery)

Subject to alterations

### Mounting scheme for side opening car door (TTK 25 K-2-R/L)

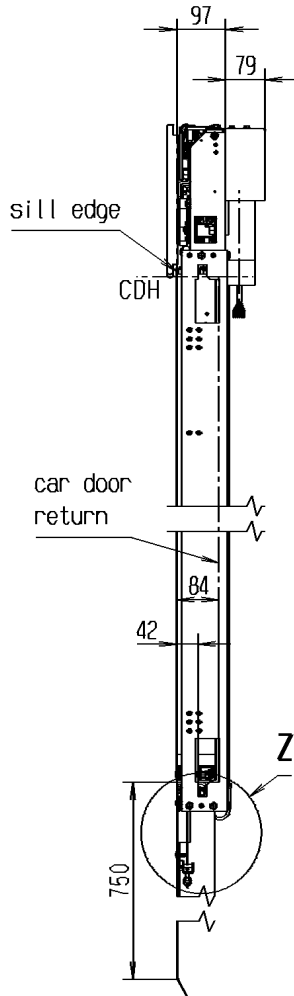


CDW: Clear Door Width  
 CDH: Clear Door Height  
 TH: Transom Height  
 TD: Car Door Depth  
 TWC: Transom Width Closing Side  
 TWR/TWL: Transom Width right/left

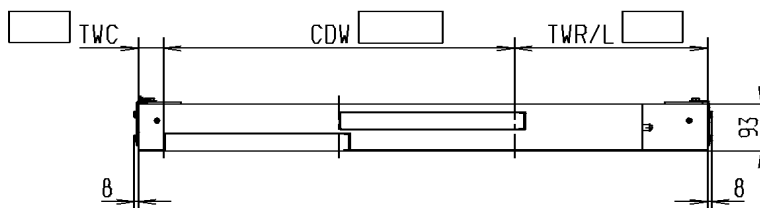
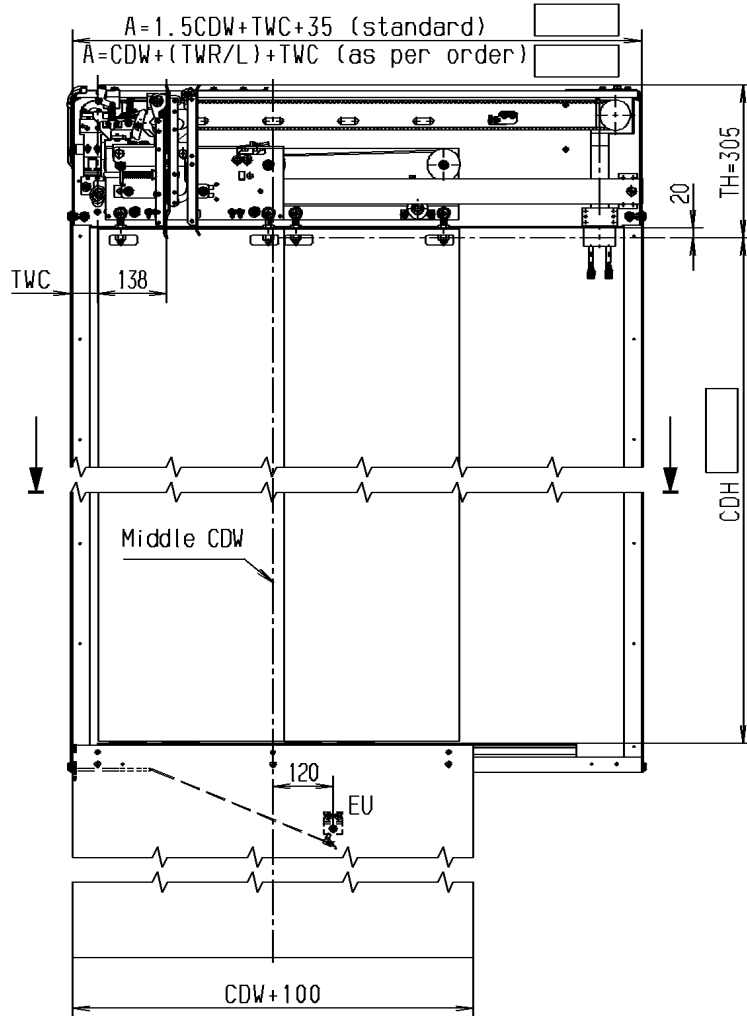
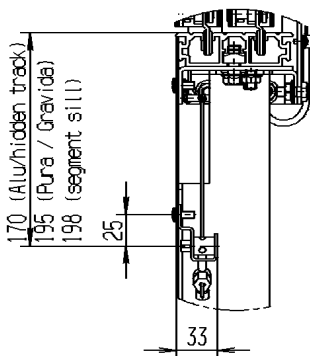
Right opening as shown  
 Mirror-image for left opening

Subject to alterations!

### Dimension Sheet TTK 25 K-2-R/L



Detail Z

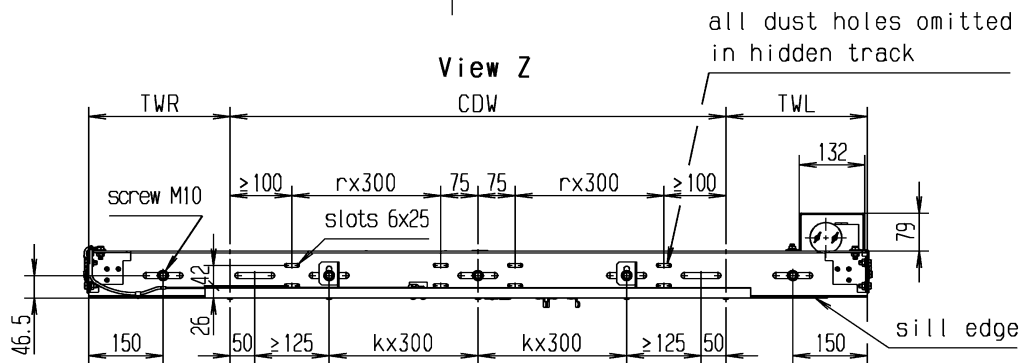
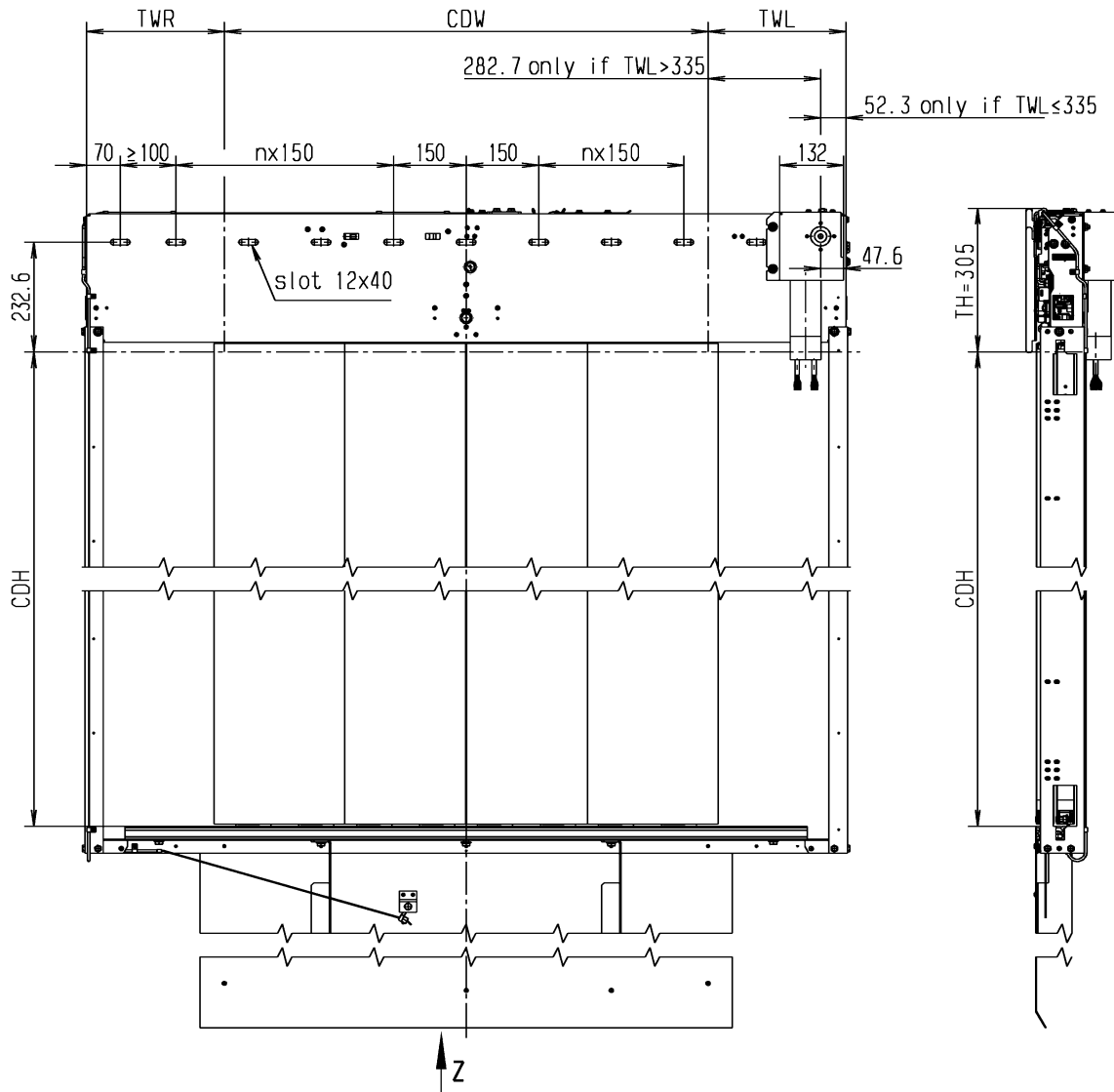


- CDW: Clear Door Width 700 – 1400mm
- CDH: Clear Door Height 2000 – 2300mm
- TH: Transom Height 305mm
- TWC: Transom Width Closing Side 50mm
- TWR/TWL: Transom Width right/left CDW/2+35 – as per order
- EU: Emergency Unlocking

Right opening as shown  
Mirror-image for left opening

Subject to alterations!

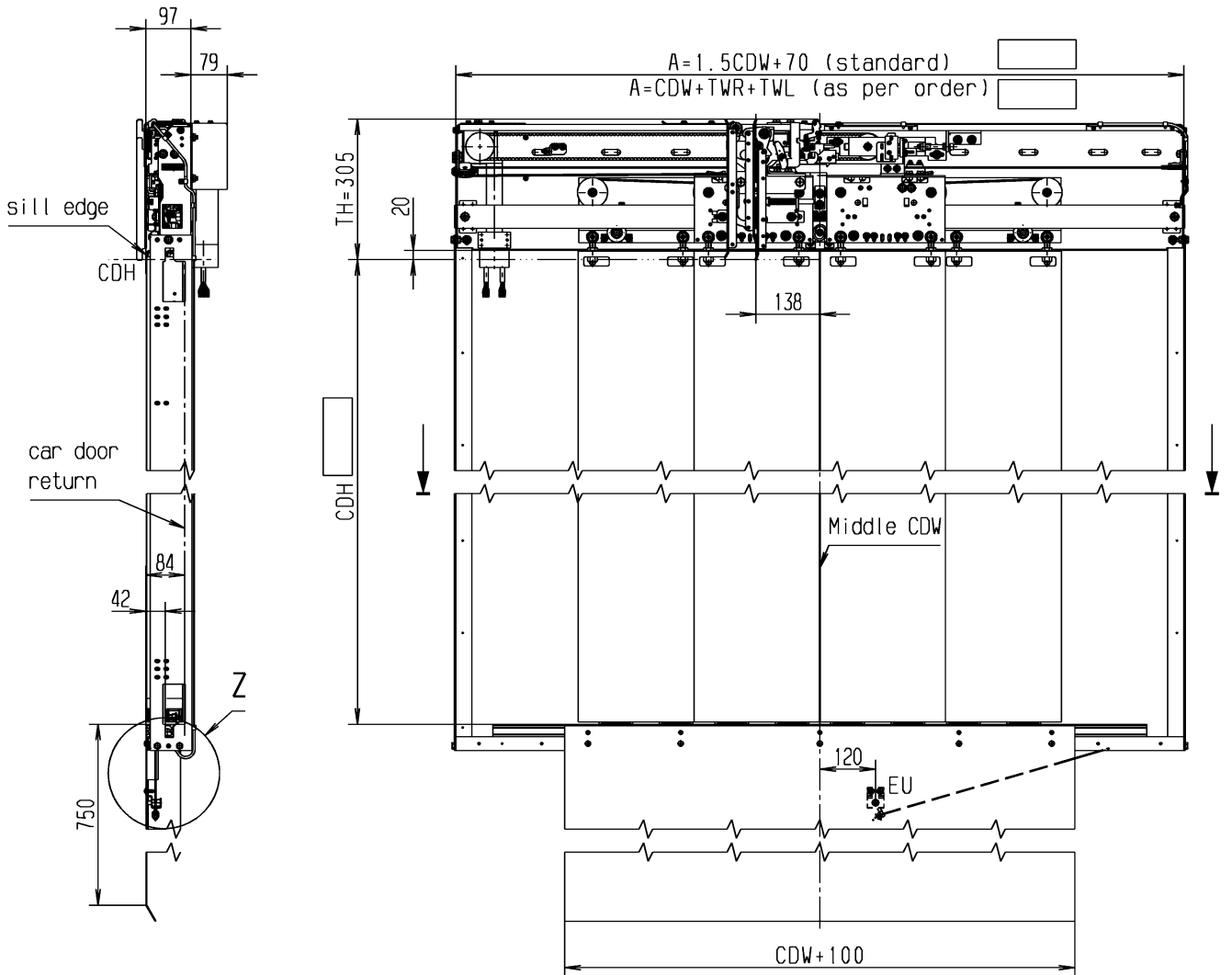
### Mounting scheme for center opening car door (TTK28 K-4-Z)



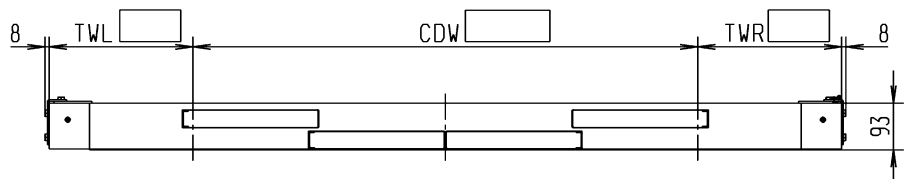
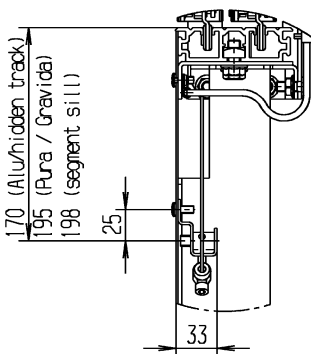
CDW: Clear Door Width  
 CDH: Clear Door Height  
 TH: Transom Height  
 TWR/TWL: Transom Width right/left

Subject to alterations!

### Dimension Sheet TTK28 K-4-Z



Detail Z

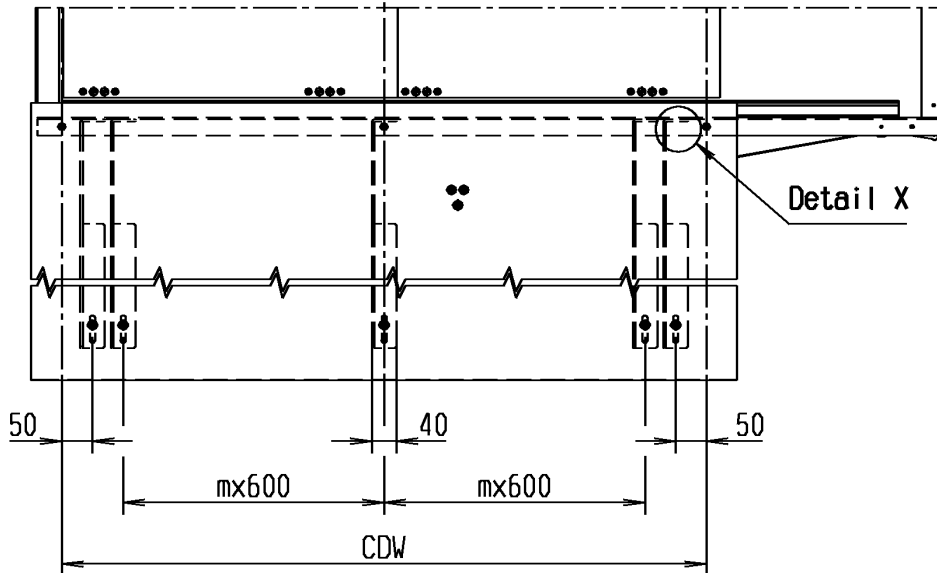


CDW:	Clear Door Width	1000 – 2400mm
CDH:	Clear Door Height	2000 – 2300mm
TH:	Transom Height	305mm
TWR/TWL:	Transom Width right/left	$CDW/4 + 35$ – as per order
EU:	Emergency Unlocking	

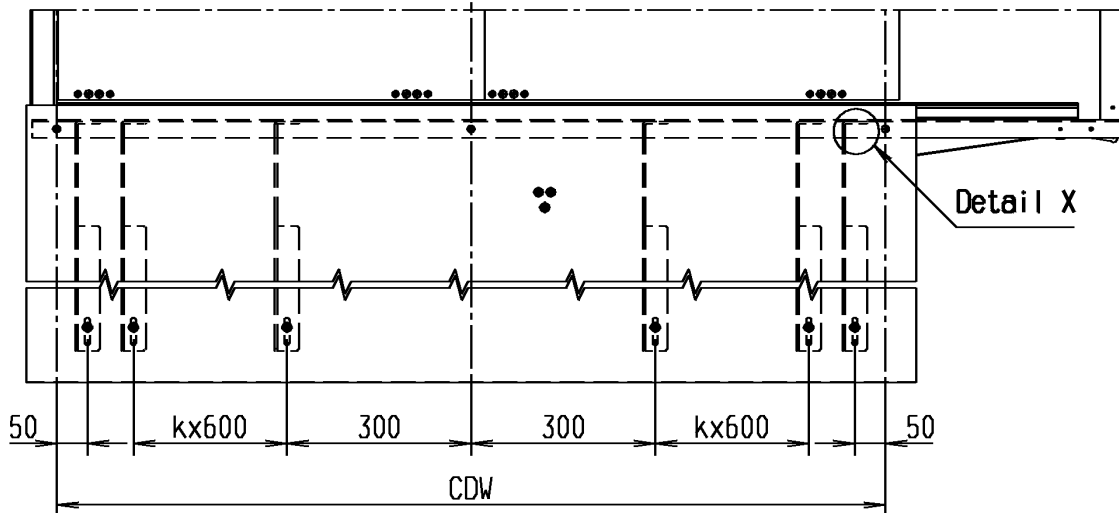
Subject to alterations!

## Mounting scheme and number of toe guard support brackets TTK 25

when:  $700 < CDW \leq 1300$



when:  $1300 < CDW \leq 1400$

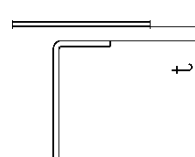


### Detail X

Number of toe guard support brackets:

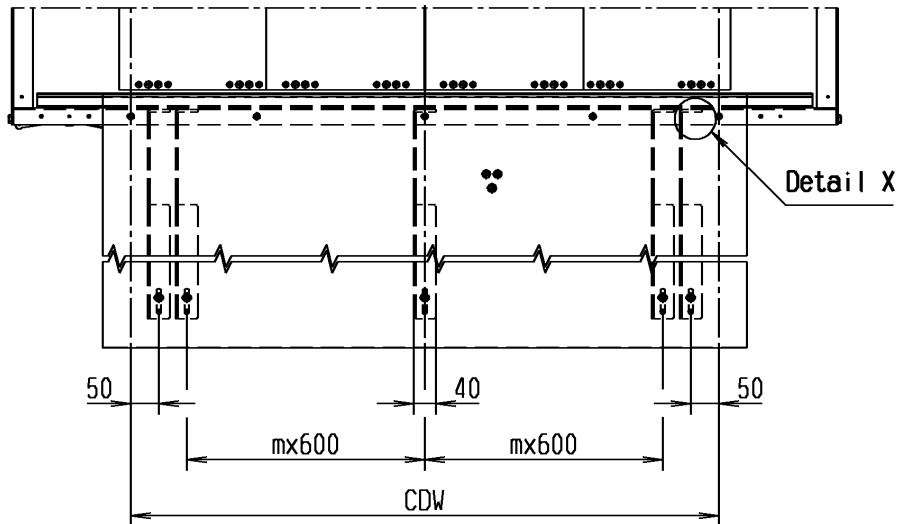
Material thickness sill support  
 $t \leq 10\text{mm}$

- 2 when  $CDW = 700$
- 3 when  $700 < CDW \leq 1300$
- 4 when  $1300 < CDW \leq 1400$

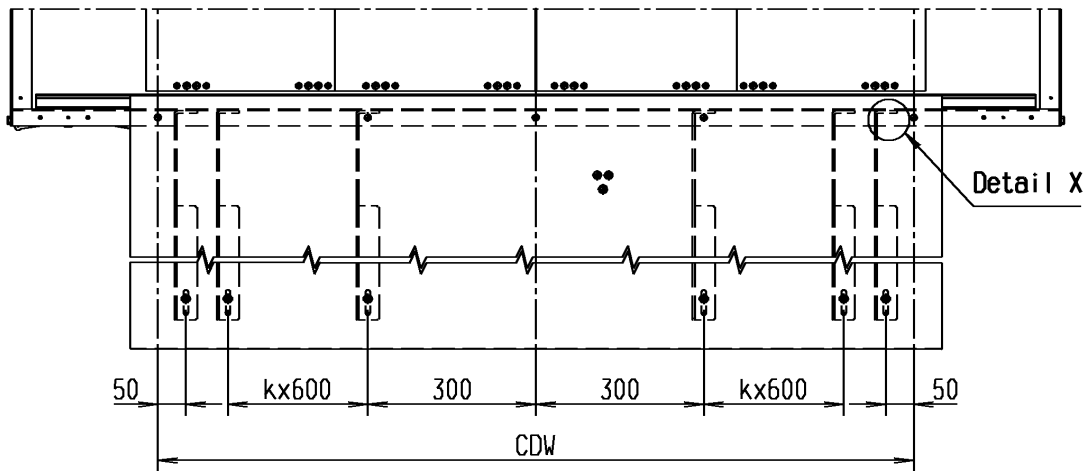


### Mounting scheme and number of toe guard support brackets TTK 28

when:  $1000 < CDW \leq 1300$   
 $1900 < CDW \leq 2400$



when:  $1300 < CDW \leq 1900$



Number of toe guard support brackets:

- 3 when  $1000 < CDW \leq 1300$
- 4 when  $1300 < CDW \leq 1900$
- 5 when  $1900 < CDW \leq 2400$

#### Detail X

Material thickness sill support  
 $t \leq 10\text{mm}$

