

■ New Meiller RepKits for repairing car door drives

UK

In Germany alone, there are approximately 750,000 lifts in operation, the vast majority of which are more than twenty years old. They are naturally subject to wear and tear, which means that disturbances to their operation can occur at irregular intervals.

The most common cause of lift breakdown is landing or car door malfunction. As moving parts that are in regular contact with users, they are exposed to vandalism, incorrect operation, and increased wear.

Most of the journeys undertaken by a lift are initiated by the car door, which, once the lift has halted, activates the relevant landing door by means of an actuator or skate.

Many of the components that make up its drive unit are subject to high levels of use, making them prone to faulty operation.

Moreover, there are many different manufacturer-specific door drives and systems available on the market, and variations can even be found within the manufacturers themselves.

When a door drive stops functioning properly, it usually happens suddenly and without warning, and the entire lift is then out of order. It is then of maximum priority to keep the down time as short as possible and to effect a quick repair to restore the lift's functionality. The best way is for the supplier of the new drive to prepare for such an even-

tuality by supplying easy-to-understand installation instructions that contain all the necessary steps, set out in a manner that is self-explanatory, unambiguous and unproblematic, thus allowing an on-site technician to dismantle the defective components and assemble the new ones. All parts included in the scope of delivery must be clearly labelled and readily identifiable.

This is the concept behind the Meiller RepKit.



Each RepKit is configured to enable the repair of a particular car door drive. The range covers drives from several manufacturers, concentrating on the models that are most frequently encountered on the market.



Repair kits consist of two boxes that contain all the parts needed to replace the defective drive parts. If the old drive was fitted with a spreading skate mechanism, for instance, the new repair kit will naturally also contain a corresponding replacement part.

Whatever the drive in question, both boxes are configured using the same

logic. They include readily understandable assembly manuals, in which each individual part needed in the replacement process is clearly numbered and described.

Detailed and accurate diagrams show how to remove those parts that have to be dismantled from the old drive, and how the new components are grouped into modules and subsequently rebuilt on the old transom. To make things even clearer, a short video showing the repair process can be accessed by QR code.

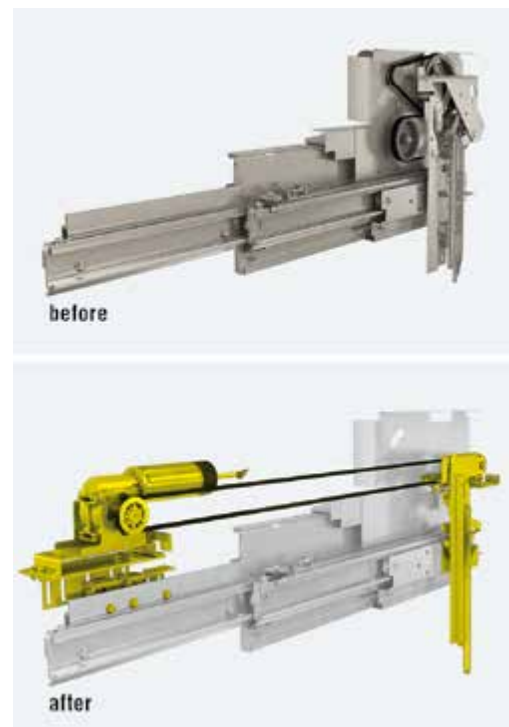
Meiller guides the service technician step by step through all the details of the repair process, all the way to the mounting points of the new drive on the existing car door transom. For this purpose, the assembly guide also contains a drilling diagram that shows, in millimetre precision, each hole that needs to be additionally drilled.

As you would expect from Meiller, all products are subjected to highly extensive testing before they are ultimately made available on the market. This means that each model-specific RepKit has successfully performed at least 100,000 door cycles at Meiller.

All RepKits are designed to enable repair/restoration by a single technician working alone.

All RepKits are powered by the new MiDrive that features well-known advantages:

- ▶ Fast and simple setup with the aid of a smartphone app: the drive obtains perfectly configured parameters simply by scanning a QR code
- ▶ Secure Bluetooth connection to the controller
- ▶ The app also allows individual modification of the travel profile
- ▶ Equipped with CanOpen interface as standard
- ▶ Eco and EcoPlus functions included in all cases
- ▶ Error codes are displayed on a smartphone in full text



RepKits are currently available for the most commonly encountered door drive systems on the market, and the range is being expanded continually.

In this way, the Munich company provides its customers with a repair kit that is quick and easy to install, resulting in a new and future-proof system in conjunction with one of the most modern door drive systems available.

Naturally, the producer range also includes repair kits for its own earlier generations of doors (door generation 1 and 2), enabling conversion to toothed belt technology based on the MiDrive drive system. There are also kits available for upgrading MAT drives to the new technology.

**Meiller Aufzugtüren GmbH,
D-80997 München**

