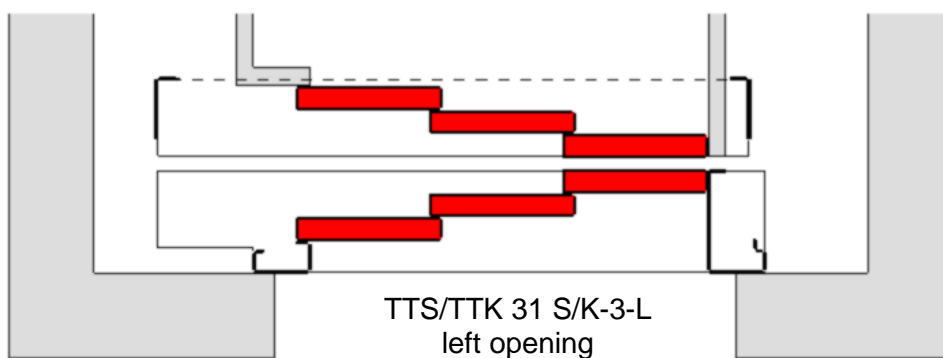
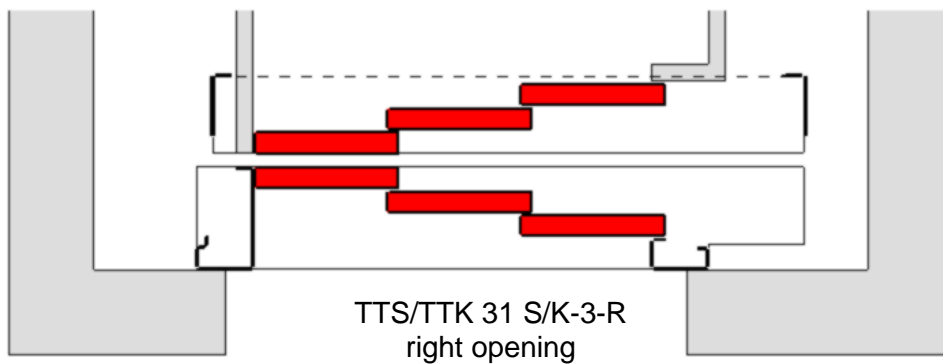
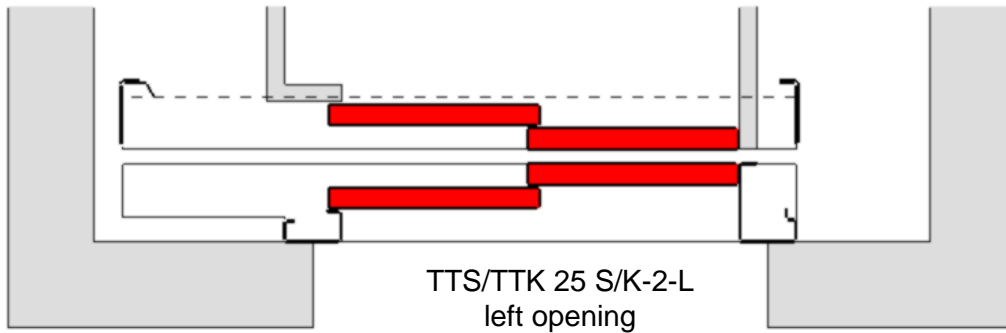
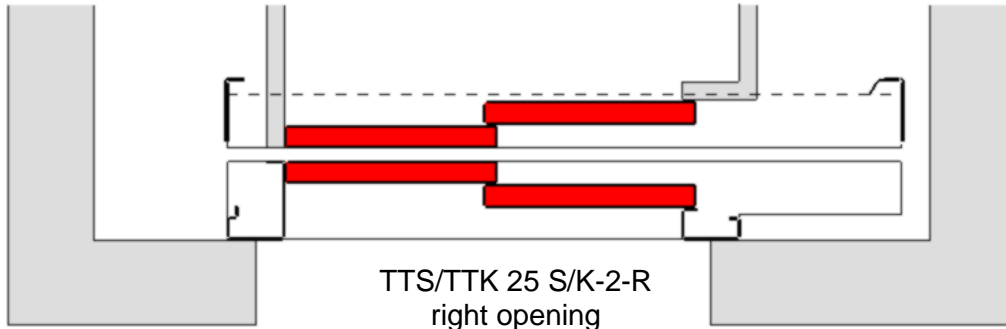
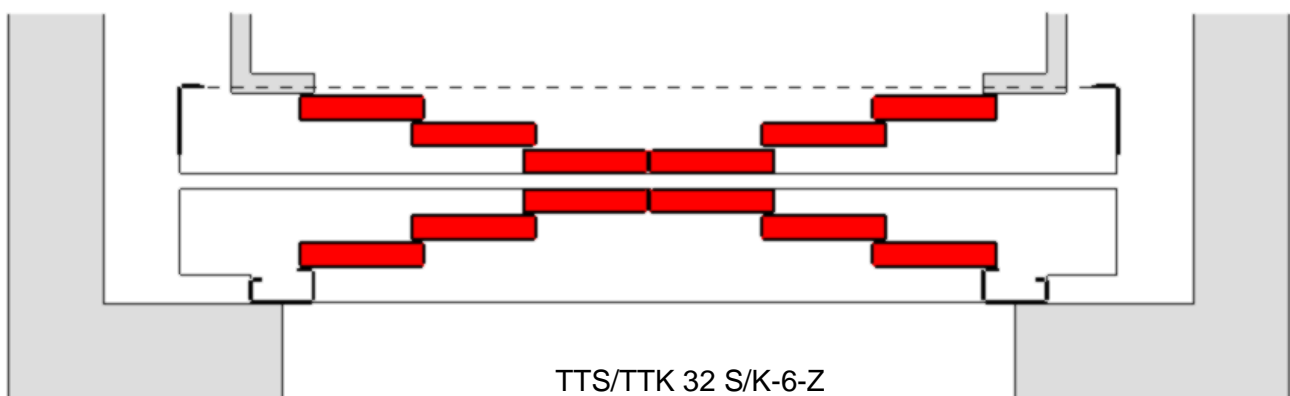
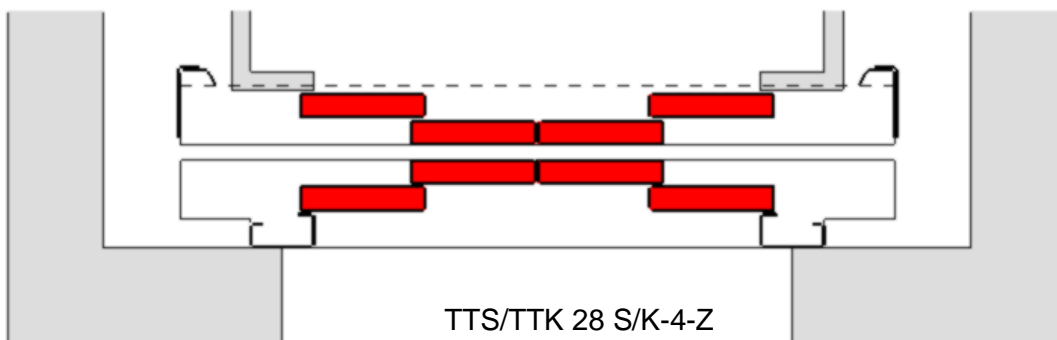
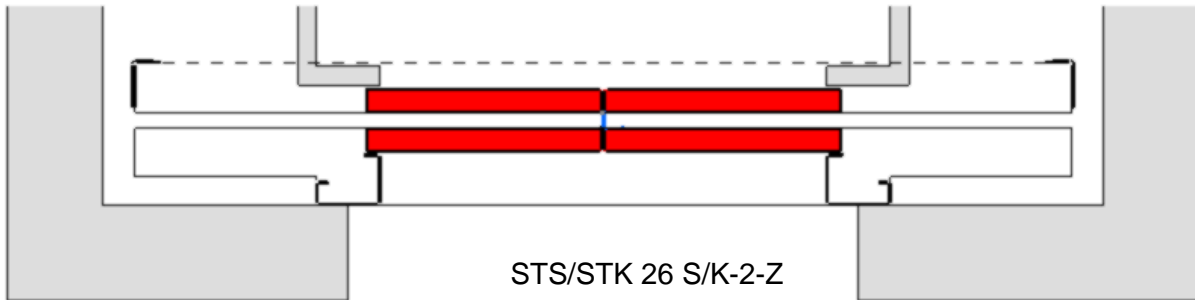


Door Panel partitioning and Opening direction side opening Landing- and Car Doors

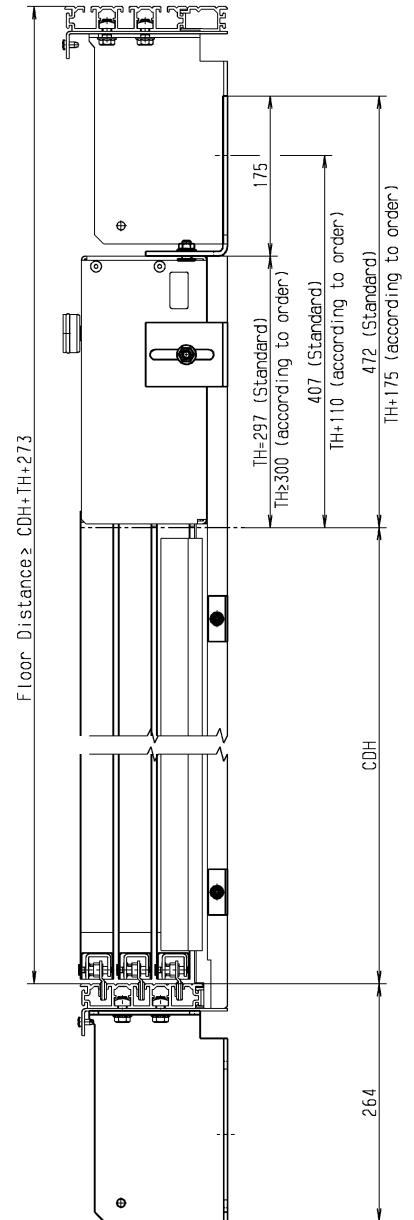
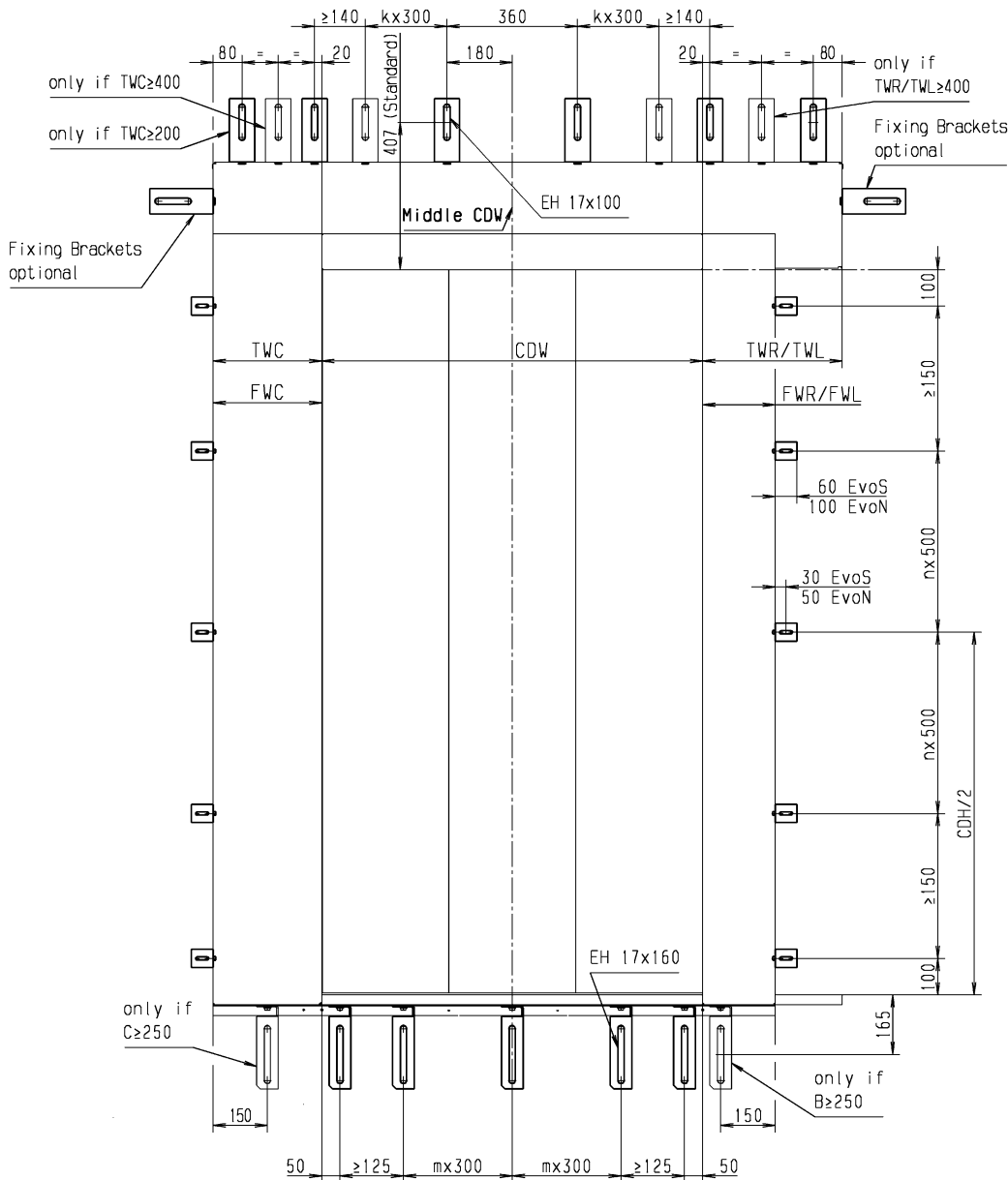


Door Panel partitioning
center opening Landing- and Car Doors



Fixing Chart for side opening Landing Doors (TTS 25/31 S-2/3-R/L)

Illustration TTS 31 S-2/3-R/L



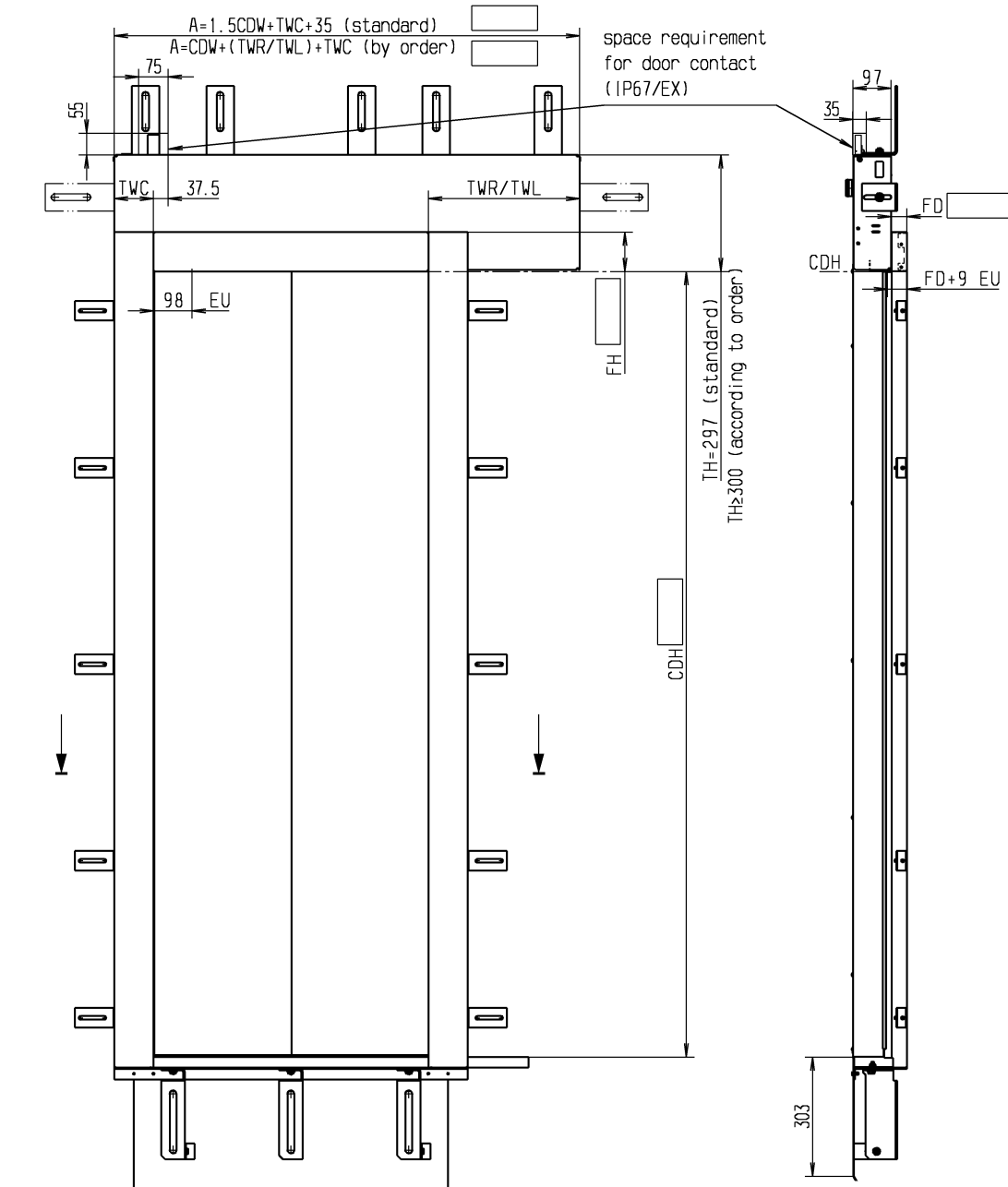
- CDH: Clear Door Height
- CDW: Clear Door Width
- TH: Transom Height
- FWC: Frame Width Closing side
- TWC: Transom Width Closing side
- FWR/FWL: Frame Width right/left
- TWR/TWL: Transom Width right/left

For Sill angle in standard length
 C=FWC, and B=FWR or FWL depending on Opening direction
 For Sill angle in Transom Width
 C=TWC, and B=TWR or TWL depending on Opening direction

Right opening as shown
 mirror-image for left opening

Subject to alterations !

Dimension Sheet TTS 25 S-2-R/L



Standard Frame Dimensions see page 6 and page 7

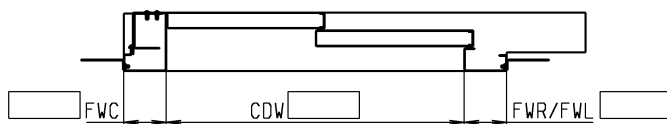
Right opening as shown mirror-image for left opening

*if dimensions are not in accordance to DIN 18091, doors built in a similar design to DIN 18091

**with reservations to special door types, designs and categories

EU: Emergency Release

Subject to alterations!

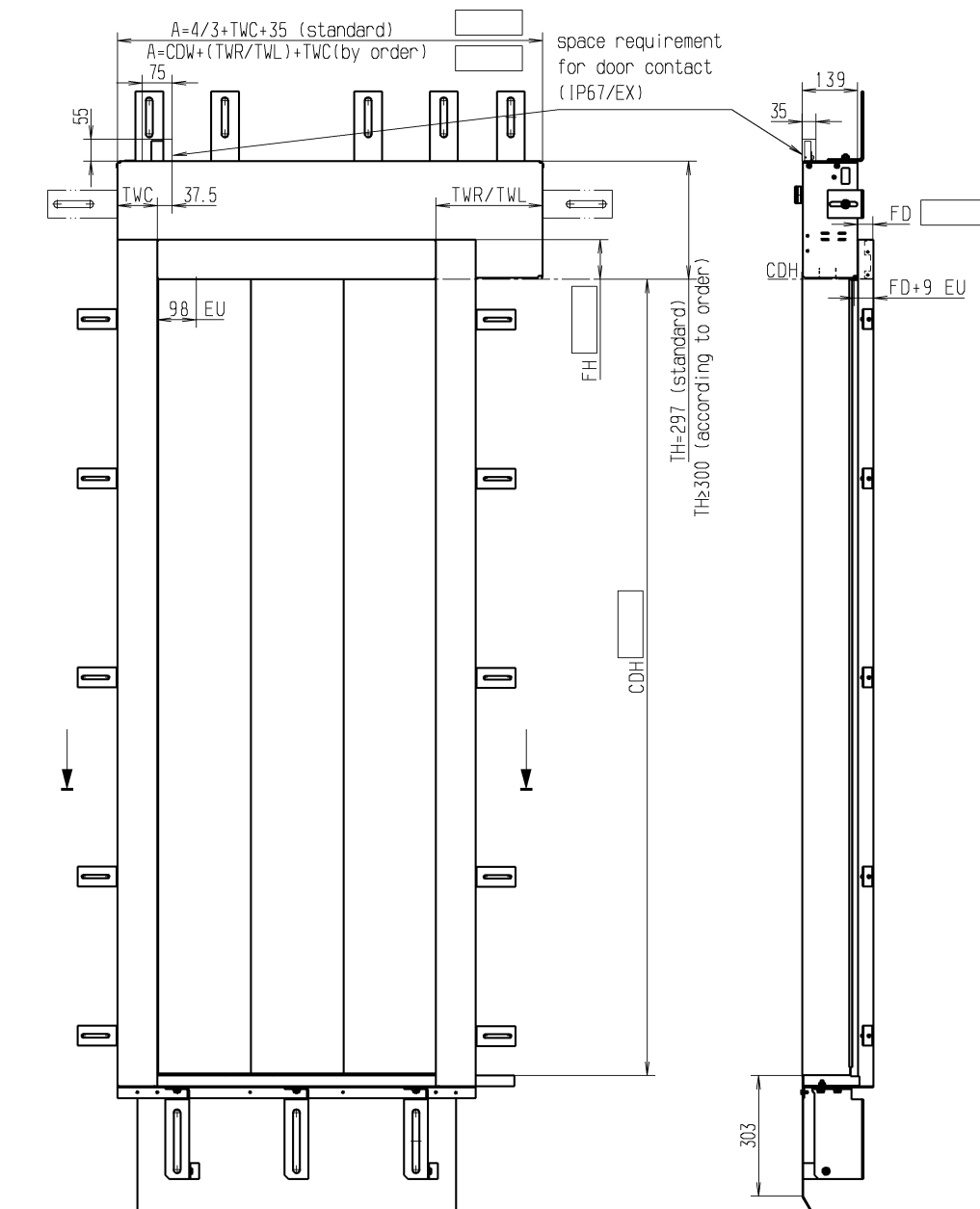


acc. DIN18091*

acc. DIN18091 and EN81-58**

CDW:	Clear Door Width	600 - 1700mm	700 - 1700mm
CDH:	Clear Door Height	1800 - 3500mm	1800 - 3500mm
FD:	Frame Depth	23 - 100mm	23 - 90mm
FH:	Frame Height	50 - 400mm	50 - 200mm
FWC:	Frame Width Closing side	80 - TWC	80 - TWC
TWC:	Transom Width Closing side	80 - 350mm	80 - 200mm
FWR/FWL:	Frame Width right/left	80 - TWR/TWL	80 - 200mm
TWR/TWL:	Transom Width right/left	COW/2+35 - 1000mm	COW/2+35

Dimension Sheet TTS 31 S-3-R/L



Standard Frame Dimensions
see page 6 and page 7

Right opening as shown
mirror-image for left opening

* if dimensions are not in accordance to DIN 18091, doors built in a similar design to DIN 18091

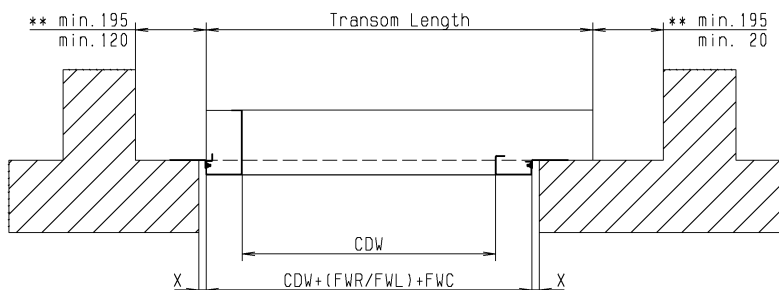
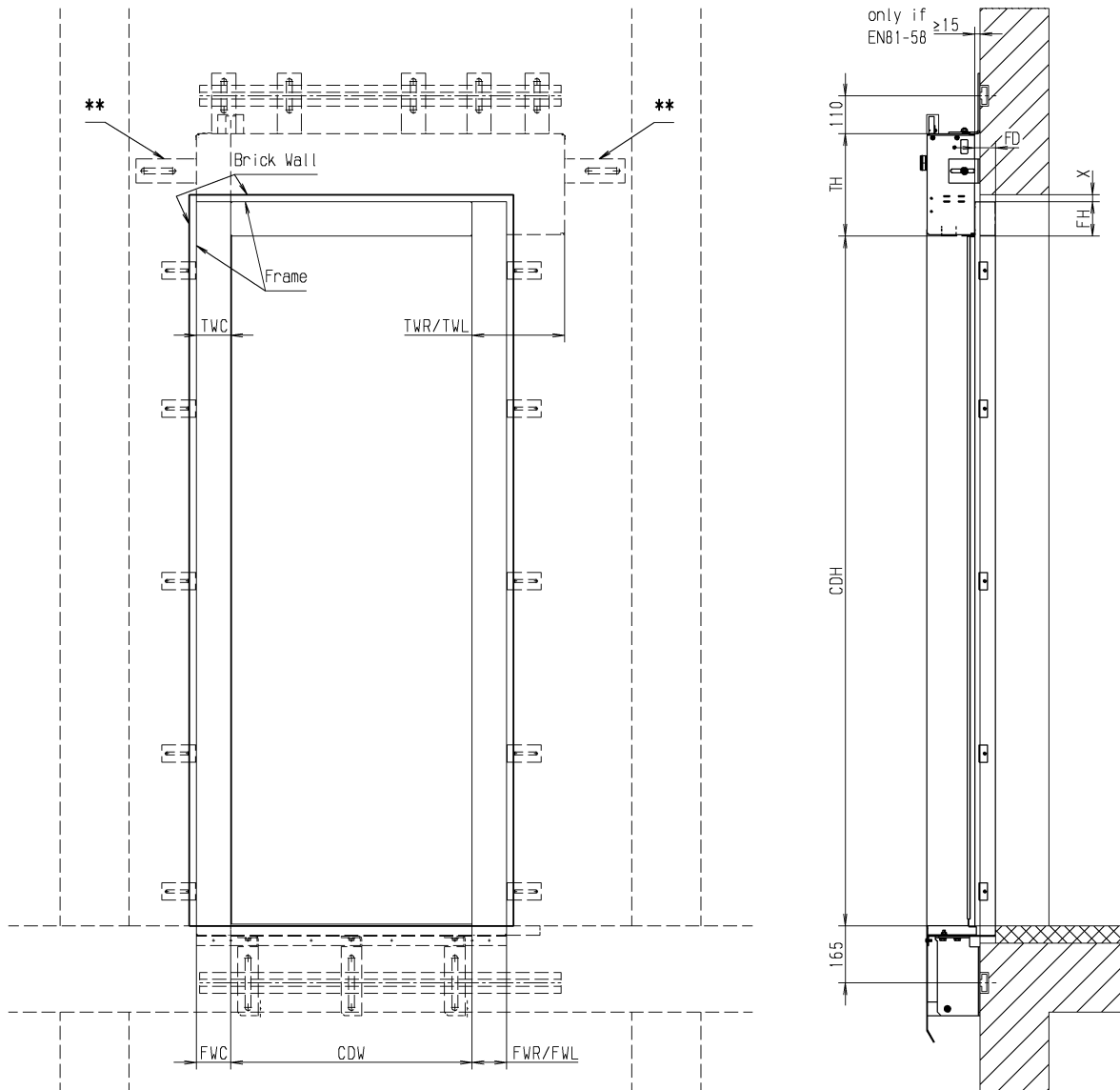
** with reservations to special door types, designs and categories

EU: Emergency Release

Subject to alterations!

		<u>acc. DIN18091*</u>	<u>acc. DIN18091 and EN81-58**</u>
CDW:	Clear Door Width	600 - 2500mm	700 - 2000mm
CDH:	Clear Door Height	1800 - 4500mm	1800 - 3500mm
FD:	Frame Depth	23 - 100mm	23 - 90mm
FH:	Frame Height	50 - 400mm	50 - 200mm
FWC:	Frame Width Closing side	80 - TWC	80 - TWC
TWC:	Transom Width Closing side	80 - 350mm	80 - 200mm
FWR/FWL:	Frame Width right/left	80 - TWR/TWL	80 - 200mm
TWR/TWL:	Transom Width right/left	COW/3+35 - 1000mm	COW/3+35

Shaft wall cut out TTS 25/31 S-2/3-R/L EvoN



Standard Frame Dimensions

FD:	40mm
FH:	100mm
FWC:	100mm
FWR/L:	100mm

Exception for HD-Doors:

FD:	60mm
FH:	120mm
FWC:	120mm
FWR/L:	120mm

X = Assembly clearance $\leq 20\text{mm}$

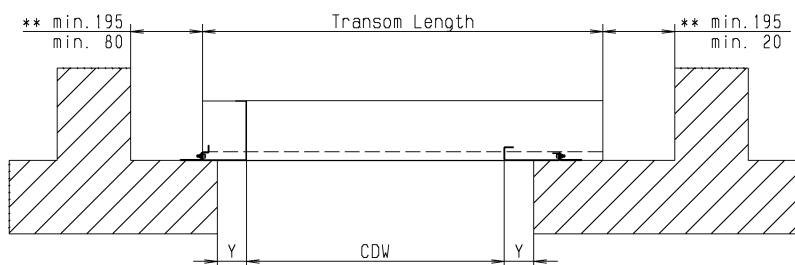
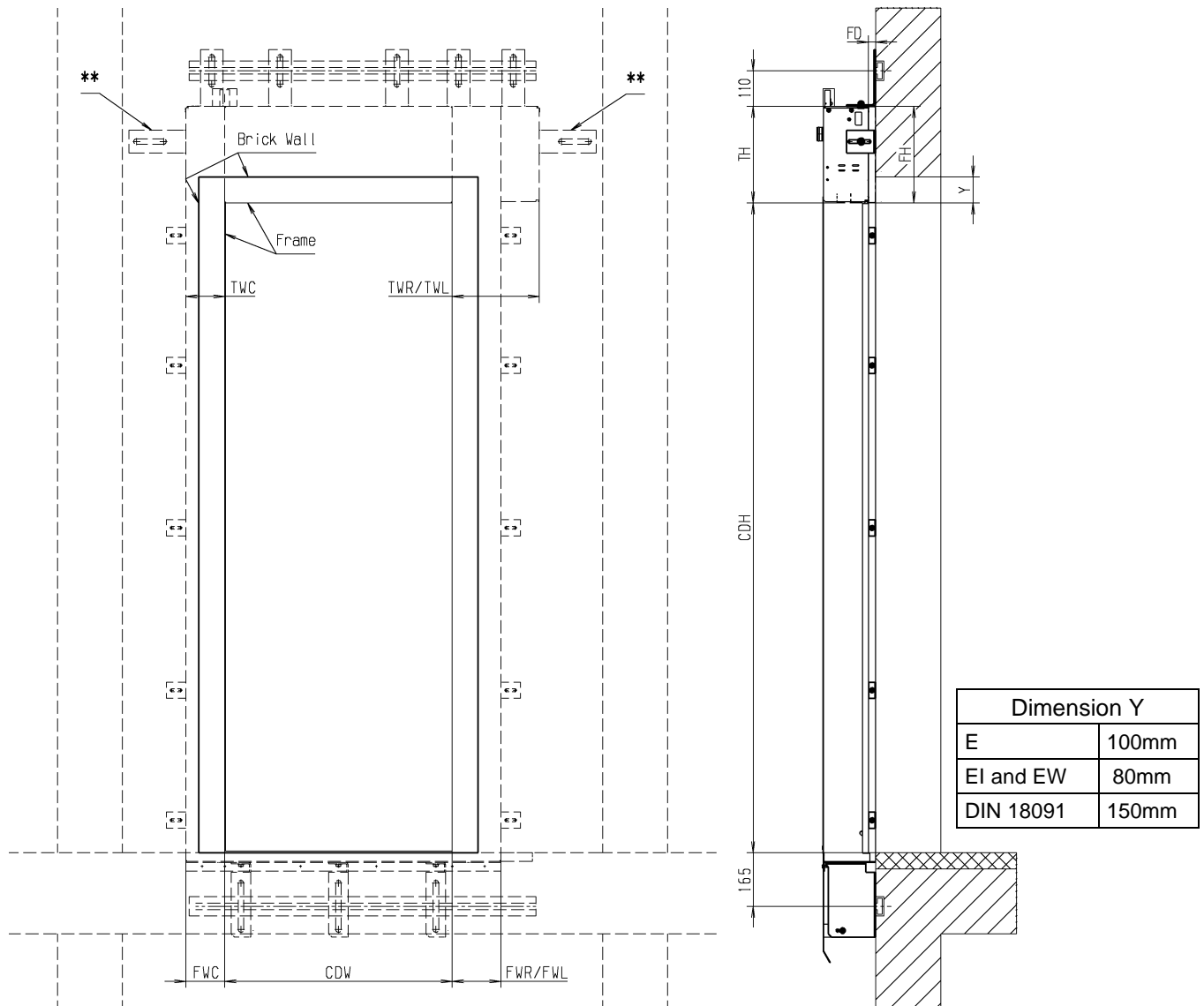
** = dimensions only needed for optional fixing brackets on transom sidewalls (upon request)!

EN81-58: The connection joint between the door frame and the bordering shaft wall must be completely sealed around the whole joint using an approved construction material which is authorised within the country of use.

Wall anchors max. M16 (not included in delivery)

Subject to alterations

Shaft wall cut out TTS 25/31 S-2/3-R/L EvoS



Standard Frame Dimensions:

FD:	23mm
FH:	TH
FWC:	120mm
FWR/L:	200mm

Exception for EN81-58 EI60:

FD:	28mm
FH:	TH
FWC:	120mm
FWR/L:	120mm

** = dimensions only needed for optional fixing brackets on transom sidewalls (upon request)!

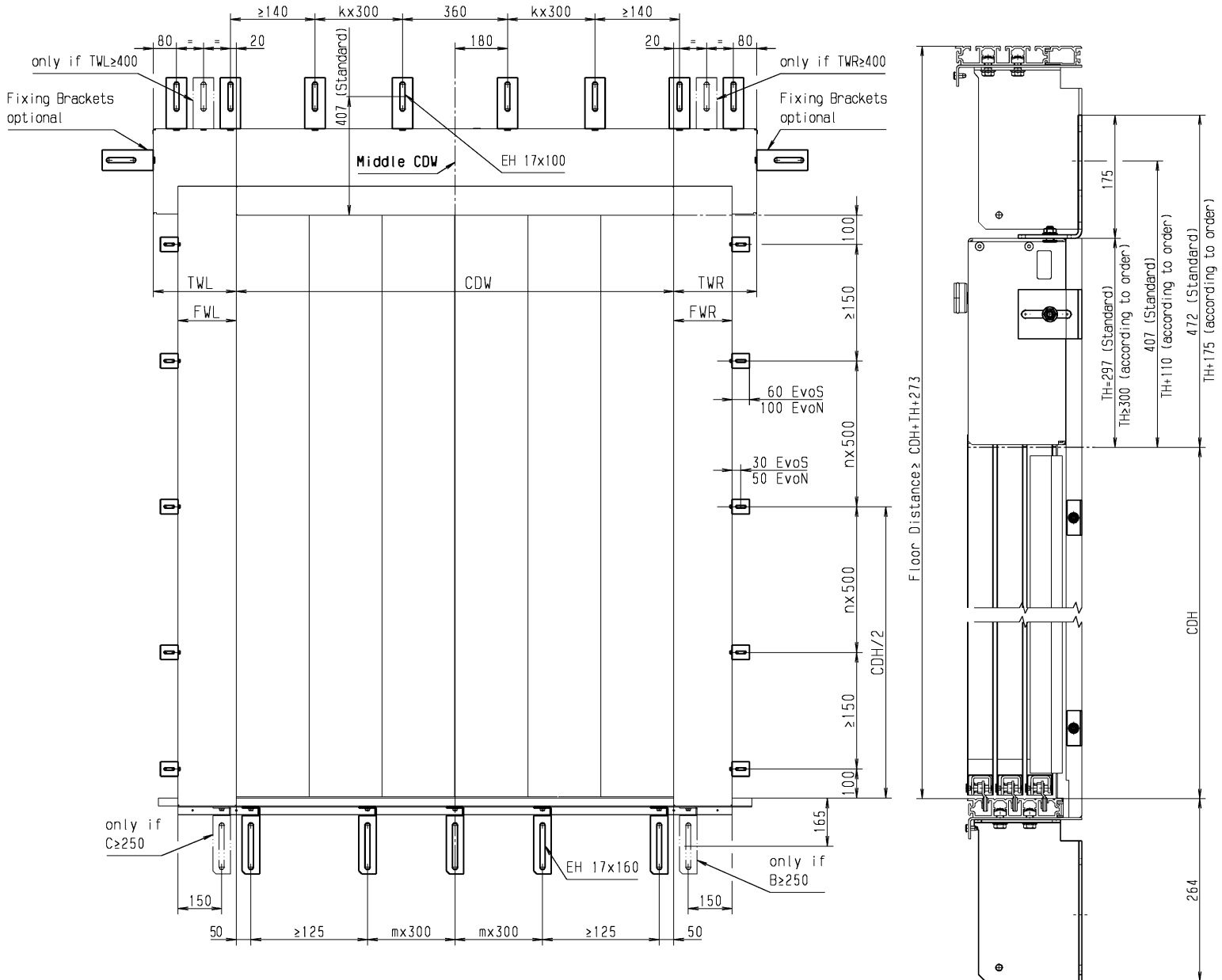
EN81-58: It must be ensured that the maximum protrusion of the frame sections into the clear wall opening is Dimension (Y) (see diagram). Should this not be the case, appropriate measures (e.g. walling up) must be undertaken to attain a maximum protrusion of Dimension (Y). The connection joint between the door frame and the bordering shaft wall must be completely sealed around the whole joint using an approved construction material which is authorised within the country of use.

Wall anchors max. M16 (not included in delivery)

Subject to alterations

Fixing Chart for center opening Landing Doors (STS26, TTS 28/32 S-2/4/6-Z)

Illustration TTS 32 S-2/4/6-Z



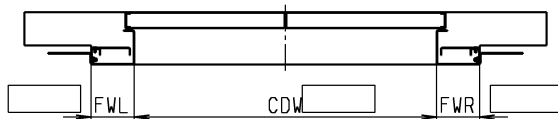
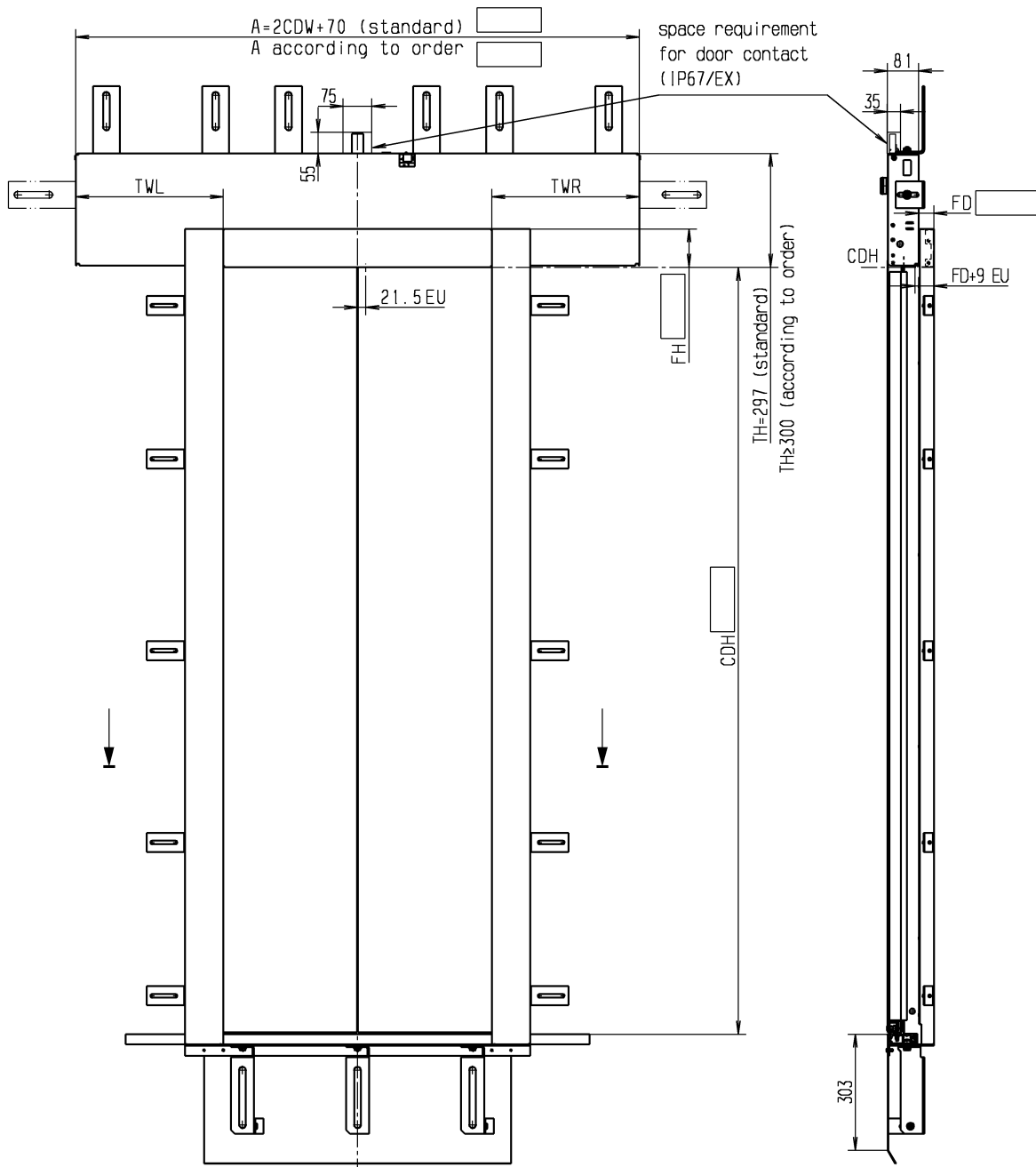
- CDH: Clear Door Height
- CDW: Clear Door Width
- TH: Trasom Height
- FWR/FWL: Frame Width right/left
- TWR/TWL: Transom Width right/left

For Sill angle in Standard length
C=FWL, and B=FWR

For Sill angle in Transom Width
C=TWL, and B=TWR

Subject to alterations !

Dimension Sheet STS 26 S-2-Z



acc. DIN18091*

acc. DIN18091 and EN81-58**

CDW:	Clear Door Width	600 - 1700mm	700 - 1700mm
CDH:	Clear Door Height	1800 - 3500mm	1800 - 3500mm
FD:	Frame Depth	23 - 100mm	23 - 90mm
FH:	Frame Height	80 - 400mm	80 - 200mm
FWR/FWL:	Frame Width right/left	80 - TWR/TWL	80 - 200mm
TWR/TWL:	Transom Width right/left	$COW/2 + 35 - 1000\text{mm}$	$COW/2 + 35$

Standard Frame Dimensions see page 12 and page 13

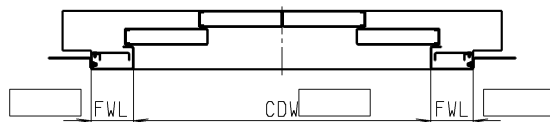
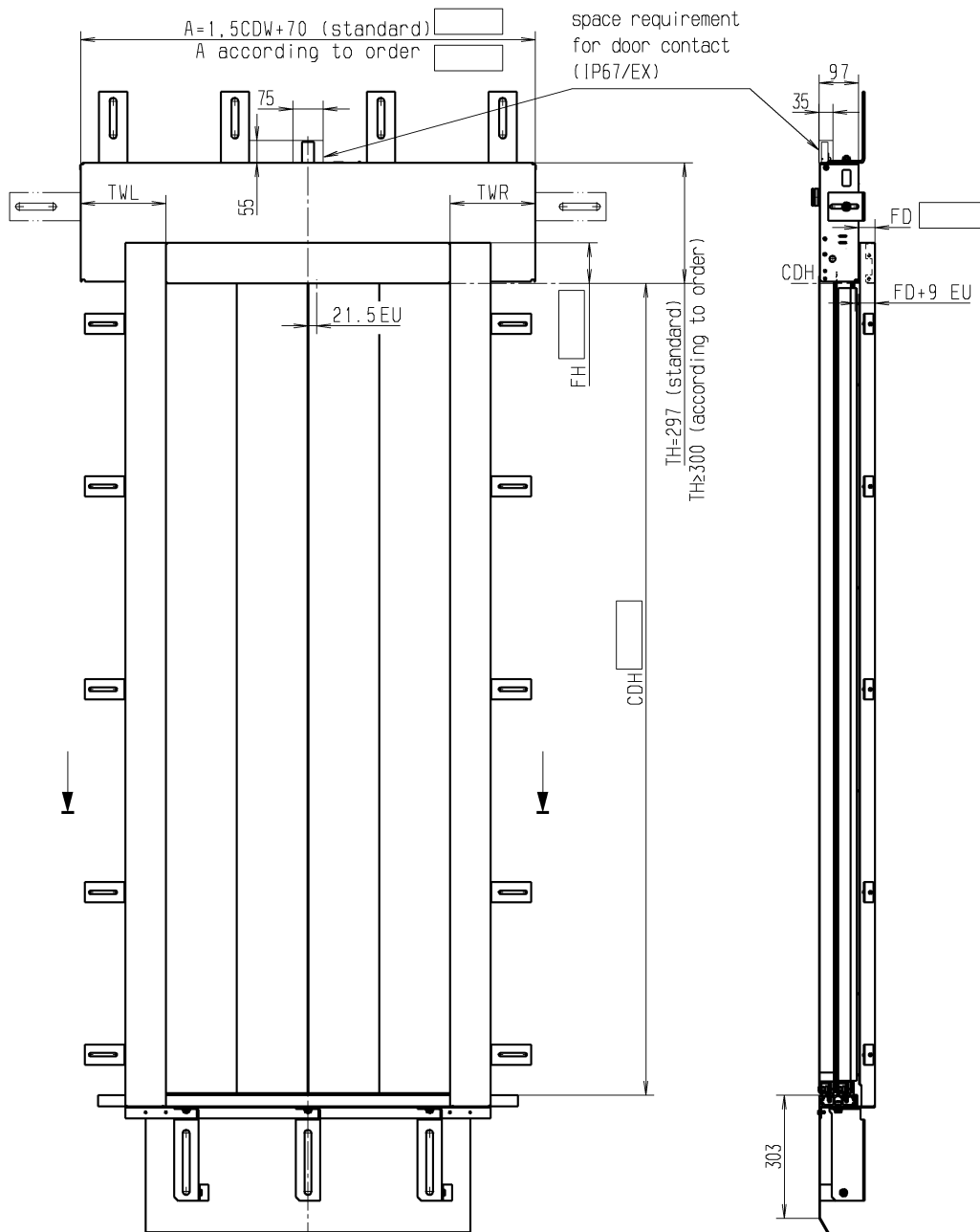
* if dimensions are not in accordance to DIN 18091, doors built in a similar design to DIN 18091

** with reservations to special door types, designs and categories

EU: Emergency Realese

Subject to alterations!

Dimension Sheet TTS 28 S-4-Z



Standard Frame Dimensions
see page 12 and page 13

* if dimensions are not in accordance to DIN 18091, doors built in a similar design to DIN 18091

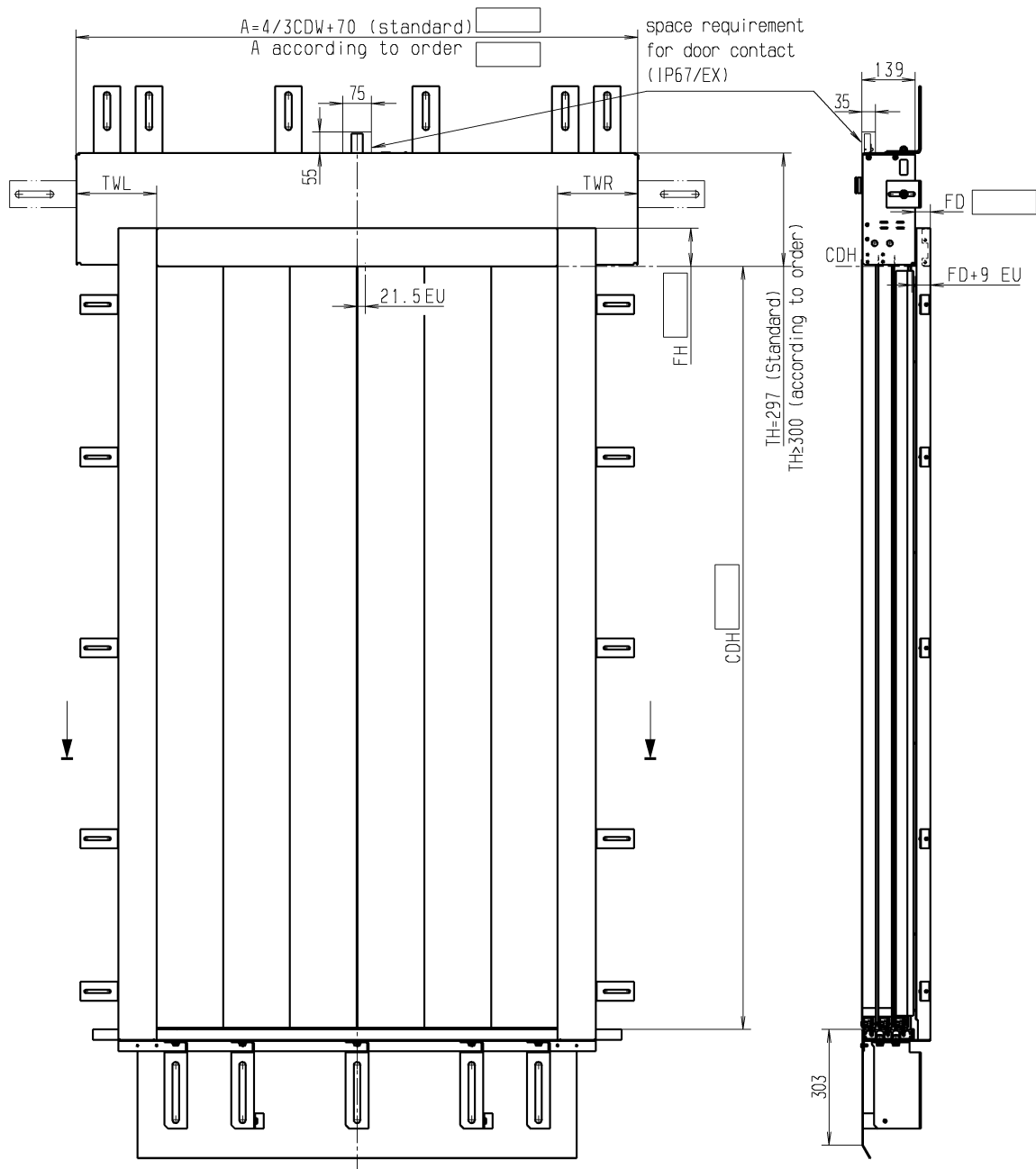
** with reservations to special door types, designs and categories

EU: Emergency Release

Subject to alterations!

		<u>acc. DIN18091*</u>	<u>acc. DIN18091 and EN81-58**</u>
CDW:	Clear Door Width	700 - 3200mm	700 - 3000mm
CDH:	Clear Door Height	1800 - 4500mm	1800 - 3500mm
FD:	Frame Depth	23 - 100mm	23 - 90mm
FH:	Frame Height	80 - 400mm	80 - 200mm
FWR/FWL:	Frame Width right/left	80 - TWR/TWL	80 - 200mm
TWR/TWL:	Transom Width right/left	COW/4+35 - 1000mm	COW/4+35

Dimension Sheet TTS 32 S-6-Z



Standard Frame Dimensions
see page 12 and page 13

*if dimensions are not in accordance to DIN 18091, doors built in a similar design to DIN 18091

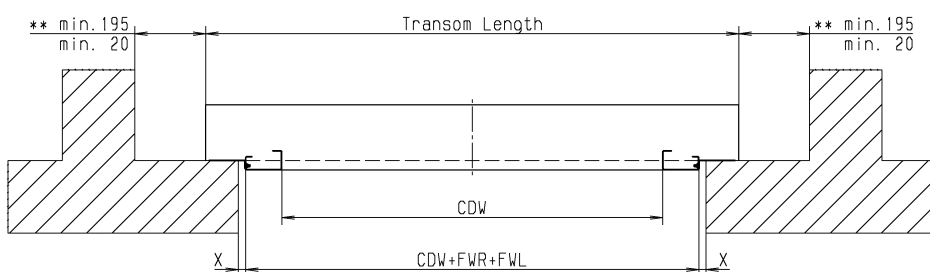
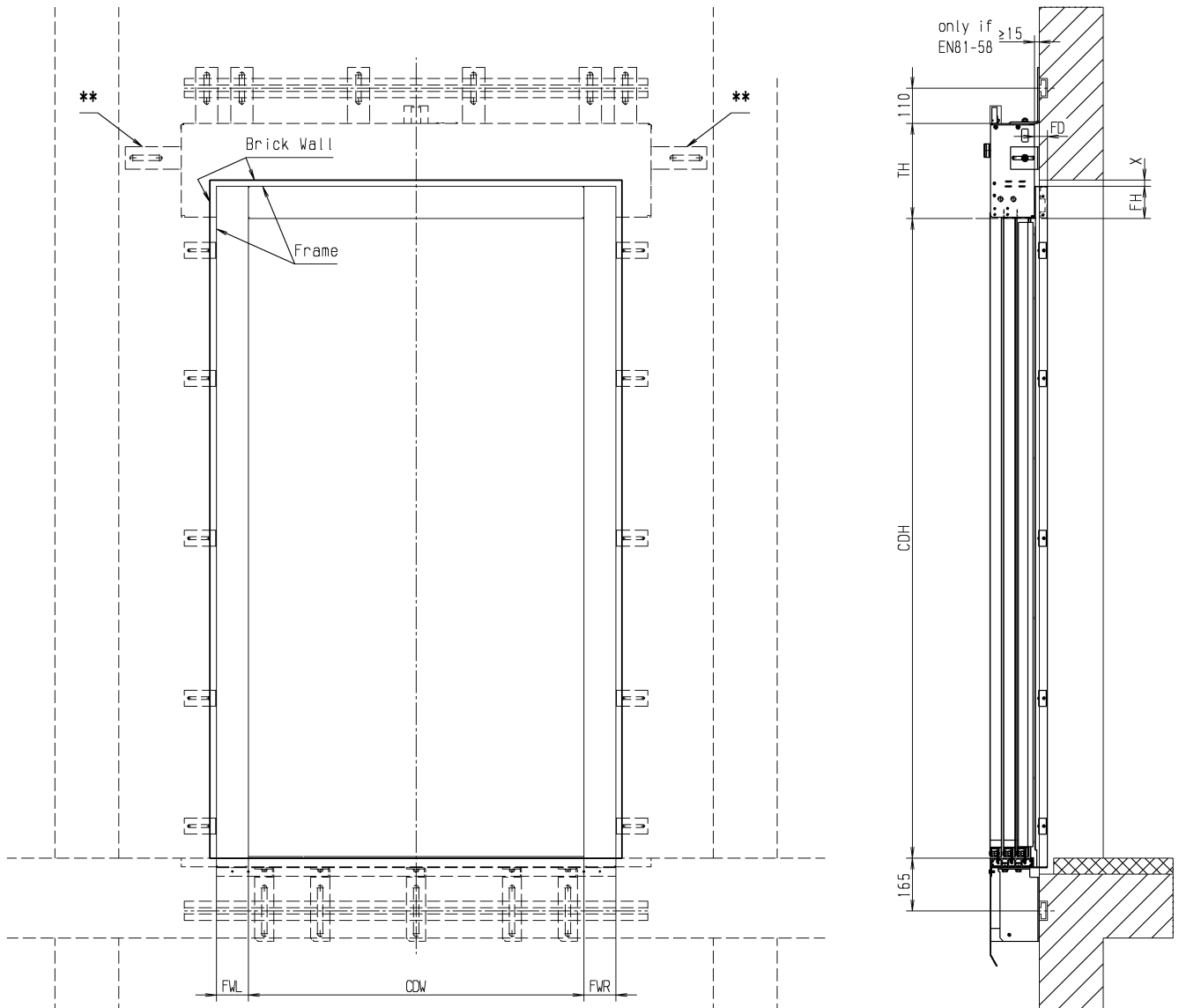
** with reservations to special door types, designs and categories

EU: Emergency Realese

Subject to alterations !

		<u>acc. DIN18091*</u>	<u>acc. DIN18091 and EN81-58**</u>
CDW:	Clear Door Width	1050 - 4400mm	1050 - 3500mm
CDH:	Clear Door Height	1800 - 4500mm	1800 - 3500mm
FD:	Frame Depth	23 - 100mm	23 - 90mm
FH:	Frame Height	80 - 400mm	80 - 200mm
FWR/FWL:	Frame Width right/left	80 - TWR/TWL	80 - 200mm
TWR/TWL:	Transom Width right/left	COW/6+35 - 1000mm	COW/6+35

Shaft wall cut out STS 26, TTS 28/32 S-2/4/6-Z EvoN



Standard Frame Dimensions:

FD:	40mm
FH:	100mm
FWR/L:	100mm

Exception for HD-Doors:

FD:	60mm
FH:	120mm
FWR/L:	120mm

X = Assembly clearance ≤ 20 mm

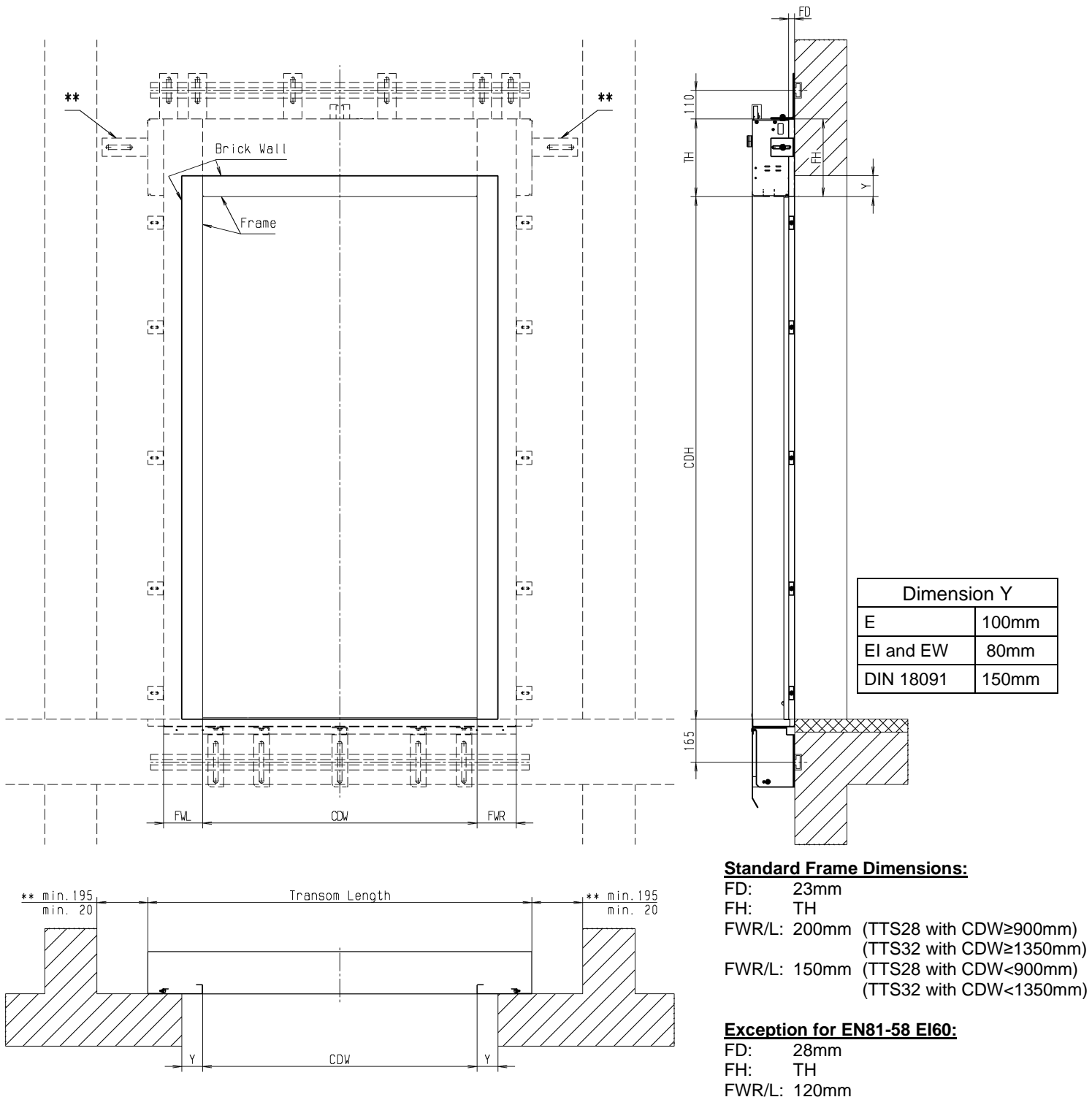
** = dimensions only needed for optional fixing brackets on transom sidewalls (upon request)!

EN81-58: The connection joint between the door frame and the bordering shaft wall must be completely sealed around the whole joint using an approved construction material which is authorised within the country of use.

Wall anchors max. M16 (not included in delivery)

Subject to alterations

Shaft wall cut out STS 26, TTS 28/32 S-2/4/6-Z EvoS



** = dimensions only needed for optional fixing brackets on transom sidewalls (upon request)!

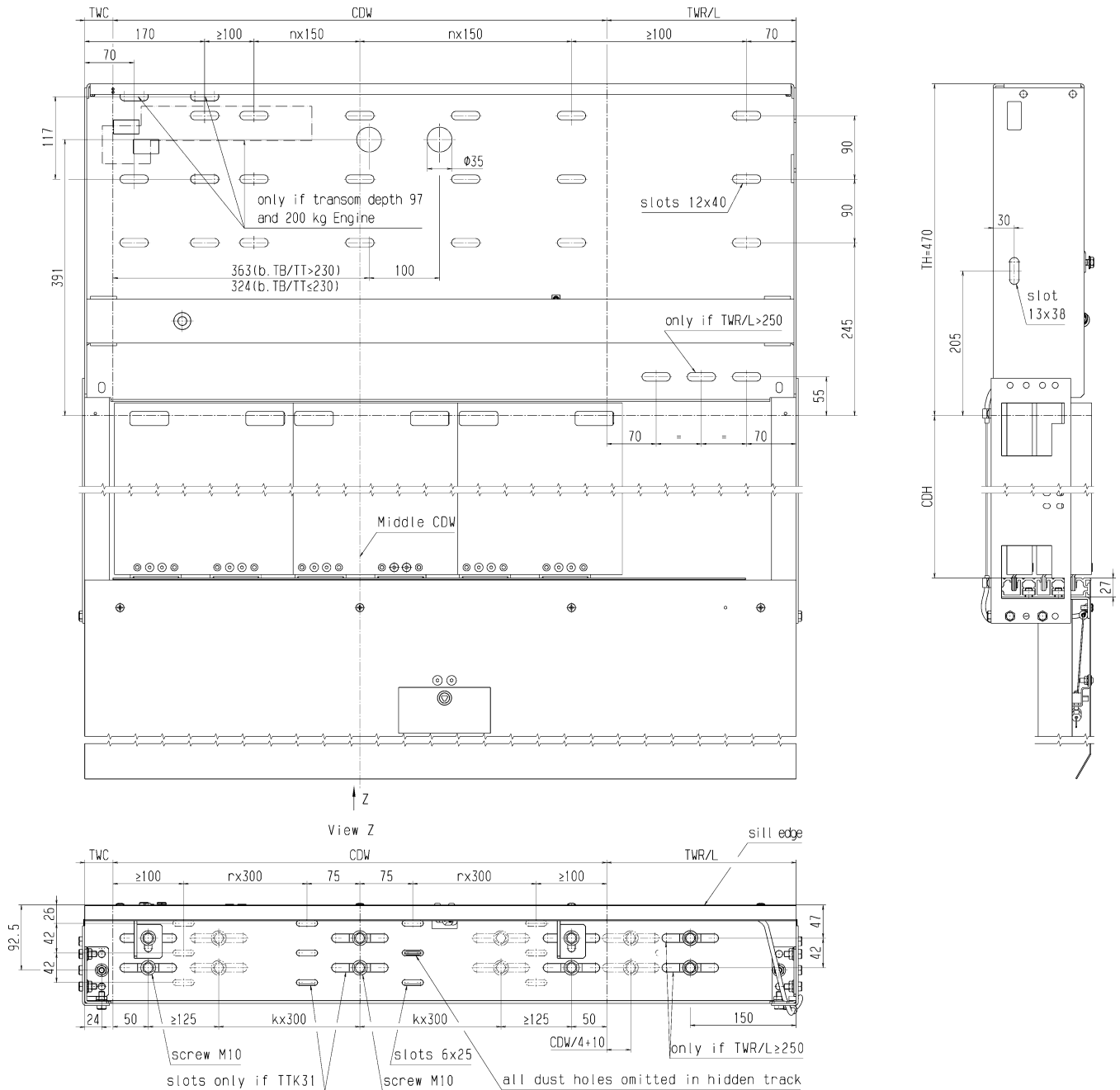
EN81-58: It must be ensured that the maximum protrusion of the frame sections into the clear wall opening is Dimension (Y) (see diagram). Should this not be the case, appropriate measures (e.g. walling up) must be undertaken to attain a maximum protrusion of Dimension (Y). The connection joint between the door frame and the bordering shaft wall must be completely sealed around the whole joint using an approved construction material which is authorised within the country of use.

Wall anchors max. M16 (not included in delivery)

Subject to alterations

Fixing chart for side opening car doors (TTK 25 K-2-R/L und TTK 31 K-3-R/L)

Illustration TTK 31 K-3-R/L

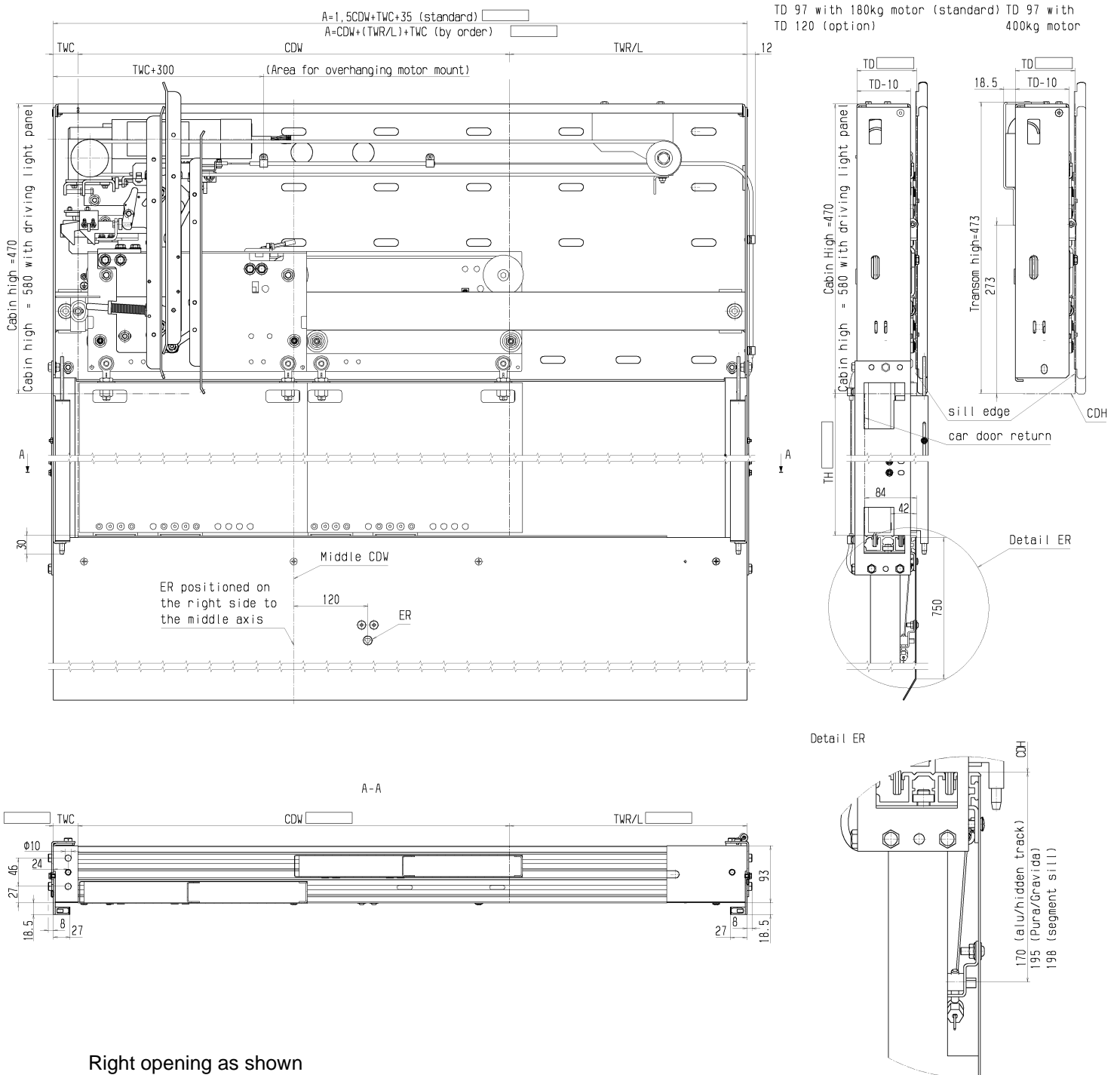


- CDW: Clear door width
- CDH: Clear door height
- TH: Transom height
- TD: Car door depth
- TWC: Transom width closing side
- TWR/TWL: Transom width right/left

Right opening as shown
mirror-image for left opening

Subject to alterations!

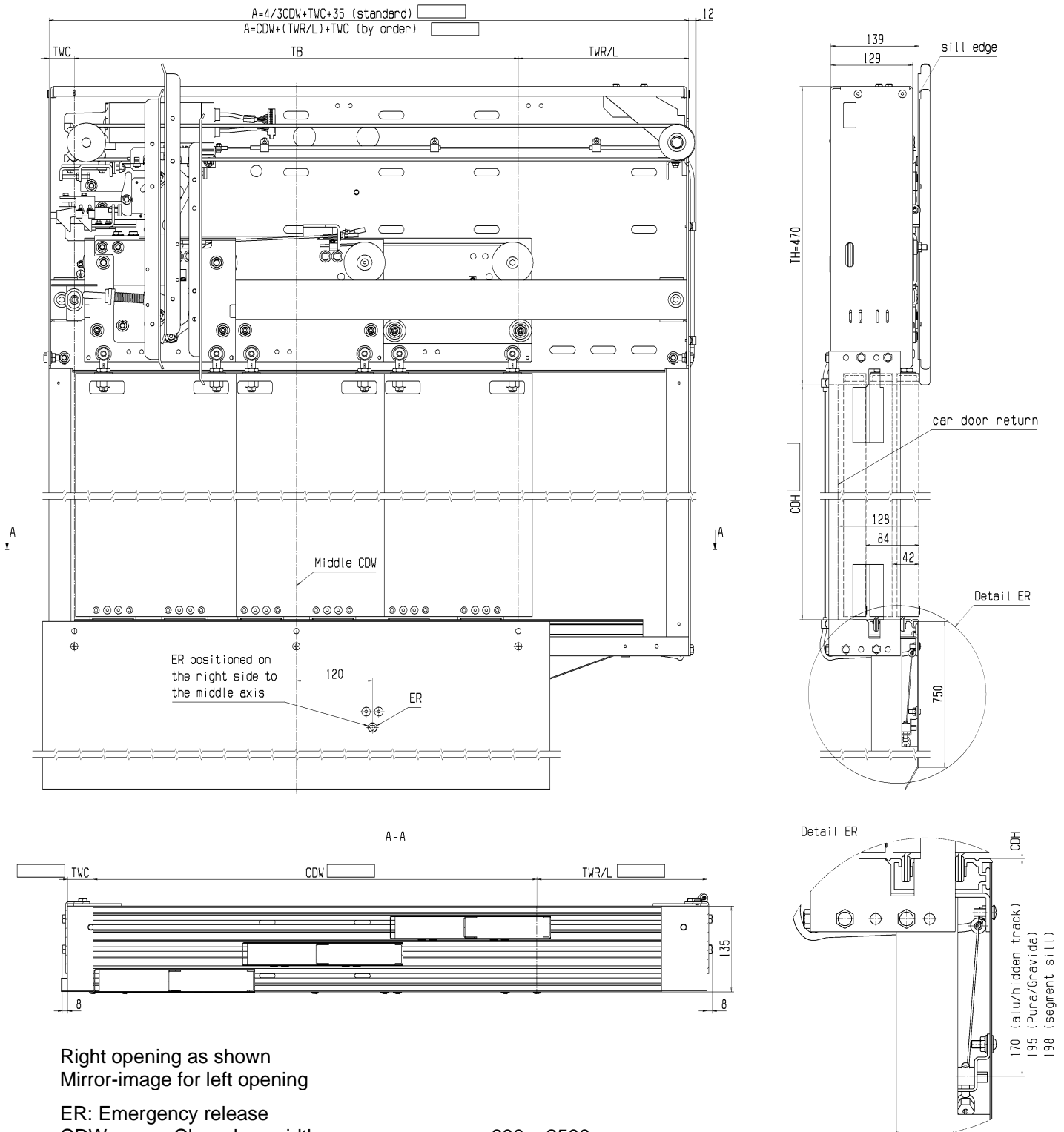
Dimension Sheet TTK 25 K-2-R/L



Right opening as shown
 Mirror-image for left opening

- ER: Emergency release
- | | | |
|----------|----------------------------|--------------------|
| CDW: | Clear door width | 600 – 1700mm |
| CDH: | Clear door height | 2000 – 3500mm |
| TD: | Car door depth | 97mm or 120mm |
| TWC: | Transom width closing side | 50mm |
| TWR/TWL: | Transom width right/left | TB/2+35 – by order |
- Look the different dimensions for explosion proof: 8200 3003 446
 Subject to alterations!

Dimension Sheet TTK 31 K-3-R/L



Right opening as shown
 Mirror-image for left opening

ER: Emergency release

CDW: Clear door width 600 – 2500mm

CDH: Clear door height 2000 – 4500mm

TD: Car door depth 139mm

TWC: Transom width closing side 50mm

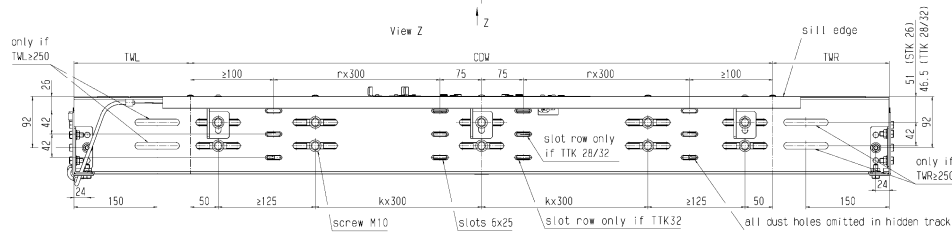
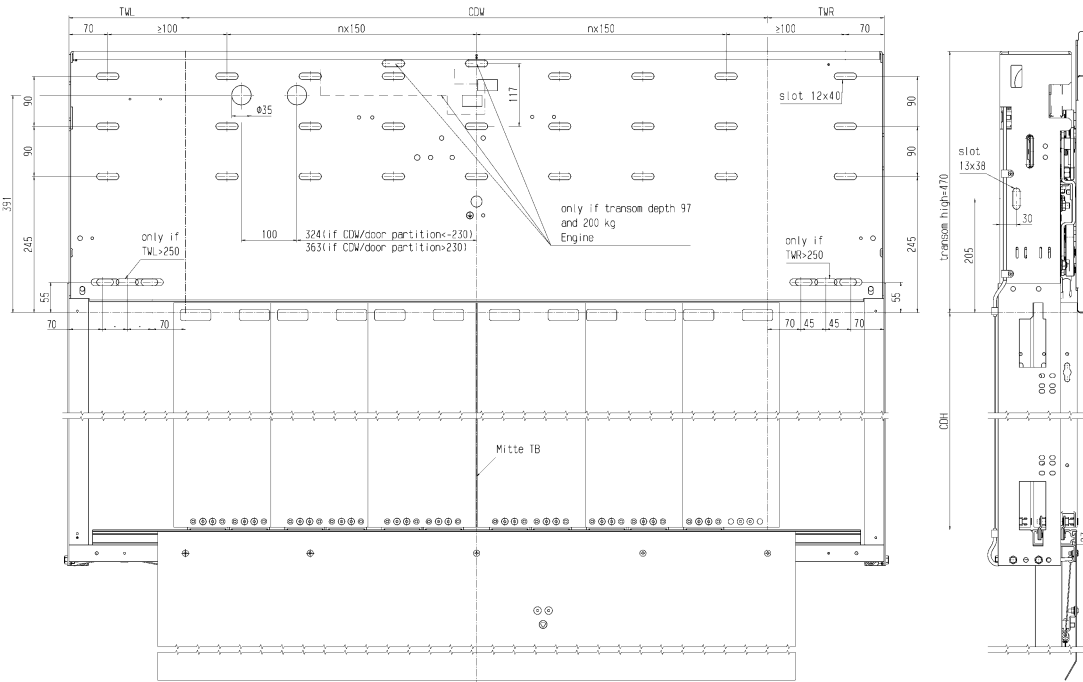
TWR/TWL: Transom width right/left TB/3+35 – by order

Look the different dimensions for explosion proof: 8200 3003 446

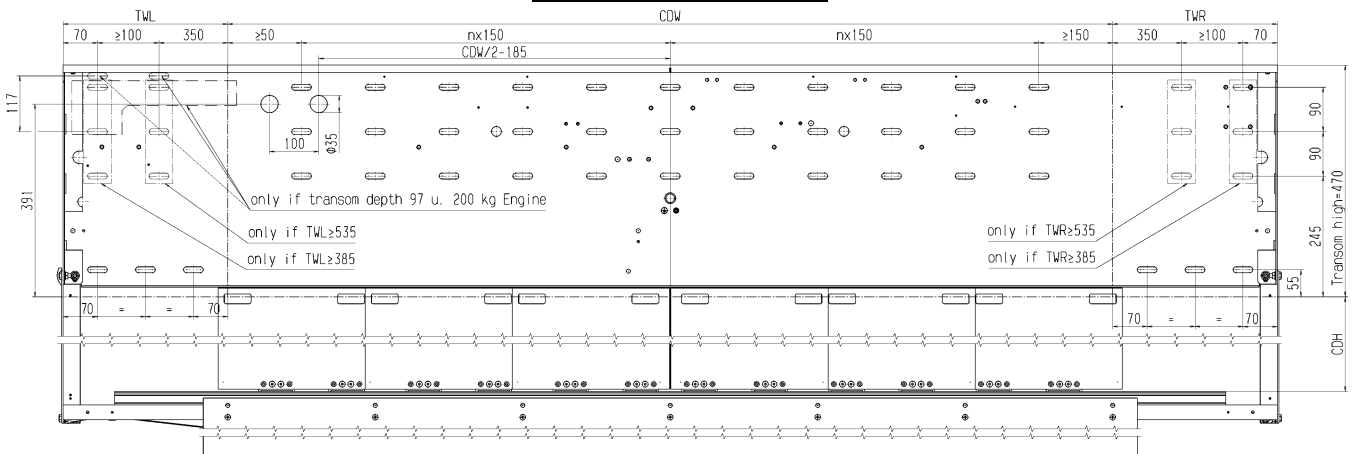
Subject to alterations!

Fixing chart for center opening car doors (STK26 K-2-Z, TTK28 K-4-Z und TTK32 K-6-Z)

with single actuator:



with double actuator:

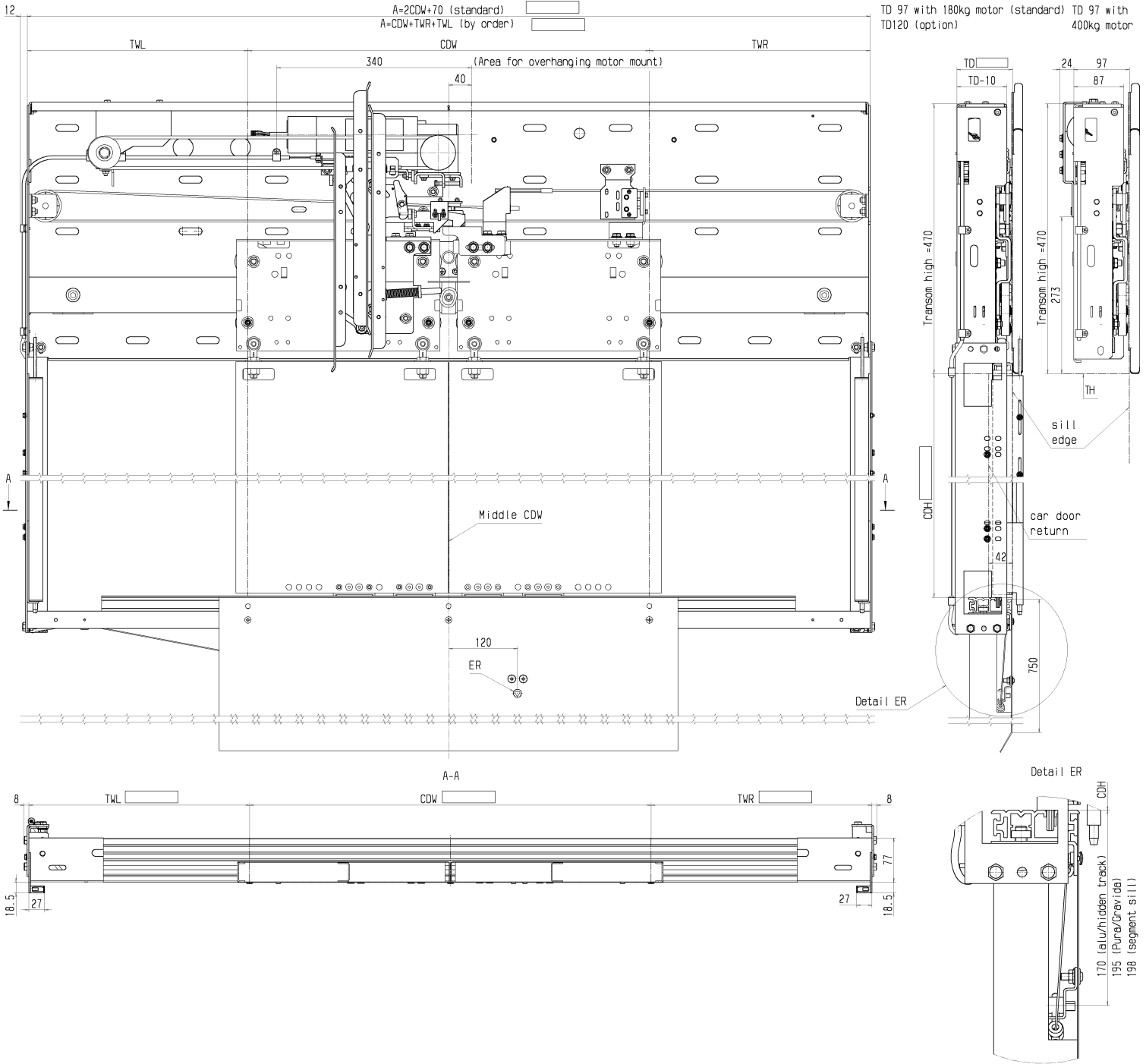


CDW: Clear door width
CDH: Clear door height

TH: Transom height
TD: Car door depth
TWR/TWL: Transom width right/left

Subject to alterations!

Dimension sheet STK 26 K-2-Z

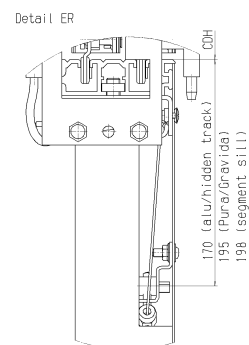
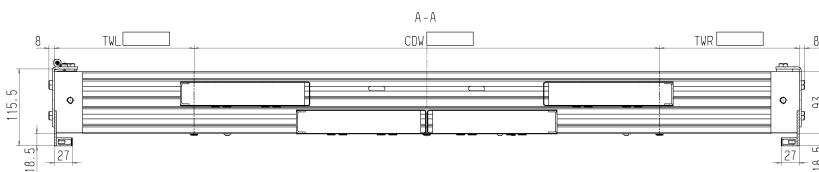
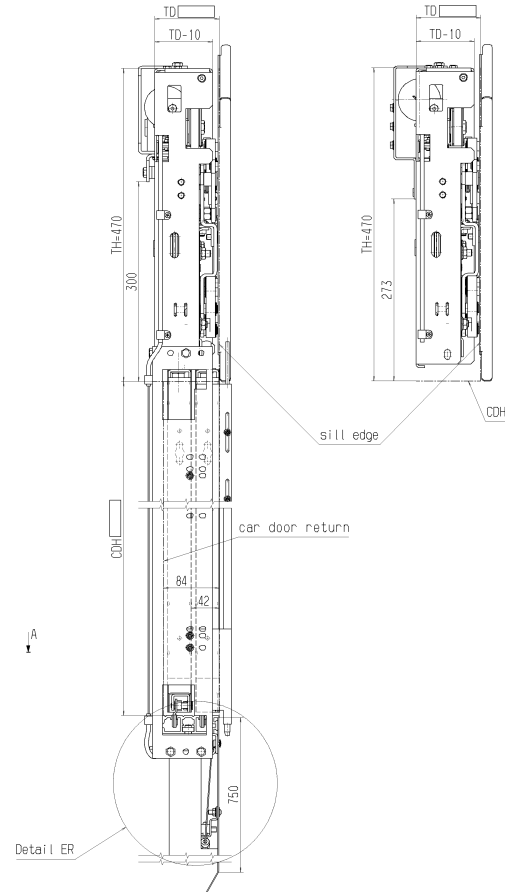
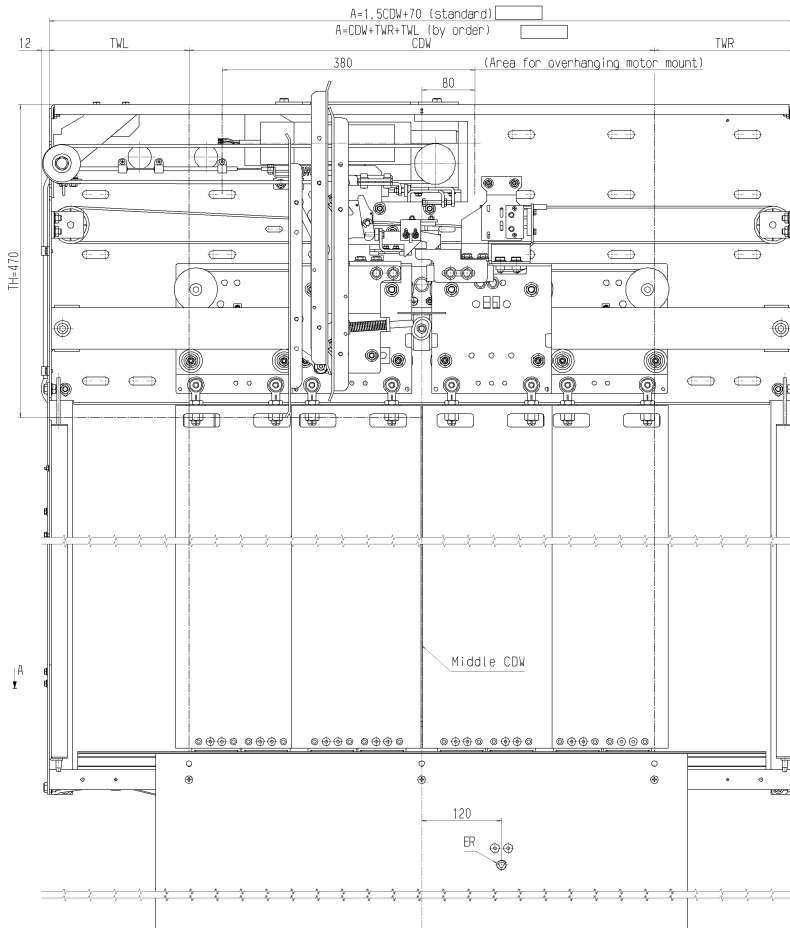


- ER: Emergency release
 CDW: Clear door width 600 – 1700mm
 CDH: Clear door height 2000 – 3500mm
 TD: Car door depth 97mm or 120mm
 TWR/TWL: Transom width right/left TB/2+35 – by order
- Look the different dimensions for explosion proof: 8200 3003 446
 Subject to alterations!

Dimension sheet TTK28 K-4-Z

TD 97 with 180kg motor and CDW>920 (standard)
TD 120 with 400kg motor and CDW>920 (option)
TD 120 with 180kg motor (option)

TD 97 with 400kg motor (standard)
TD 97 with 180kg motor and CDW<920 (standard)
TD 120 with 400kg motor and CDW<920 (option)

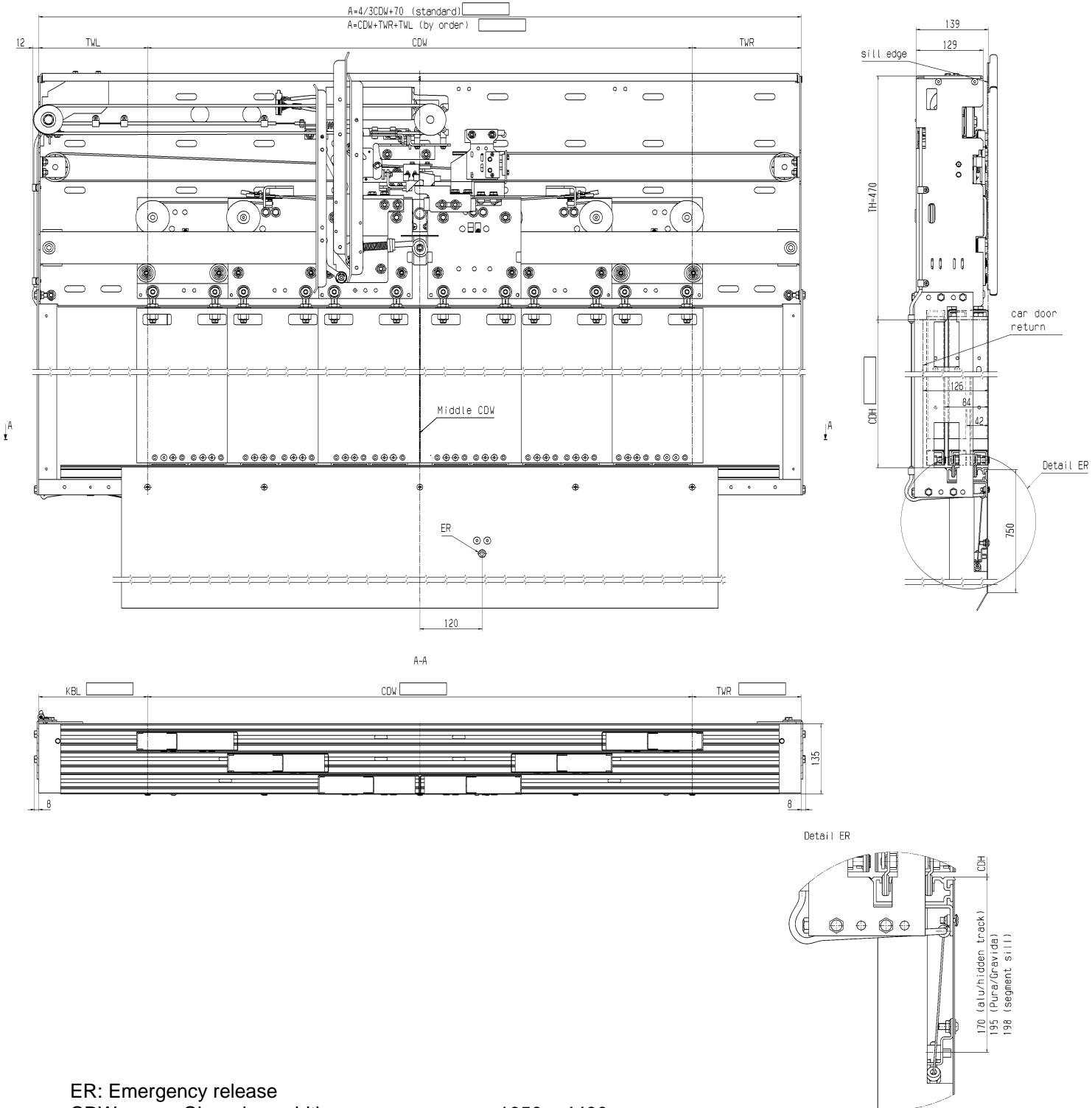


CDW: Clear door width 700 – 3200mm
CDH: Clear door height 2000 – 4500mm
TD: Car door depth 97mm or 120mm
TWR/TWL: Transom width right/left TB/4+35 – by order
Look the different dimensions for explosion proof: 8200 3003 446

ER: Emergency release

Subject to alterations!

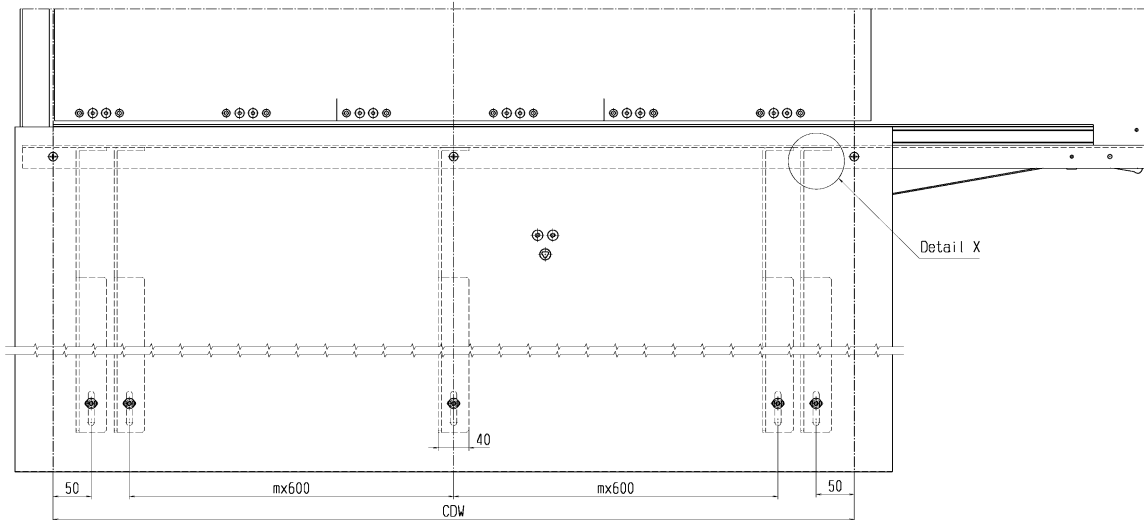
Dimension sheet TTK 32 K-6-Z



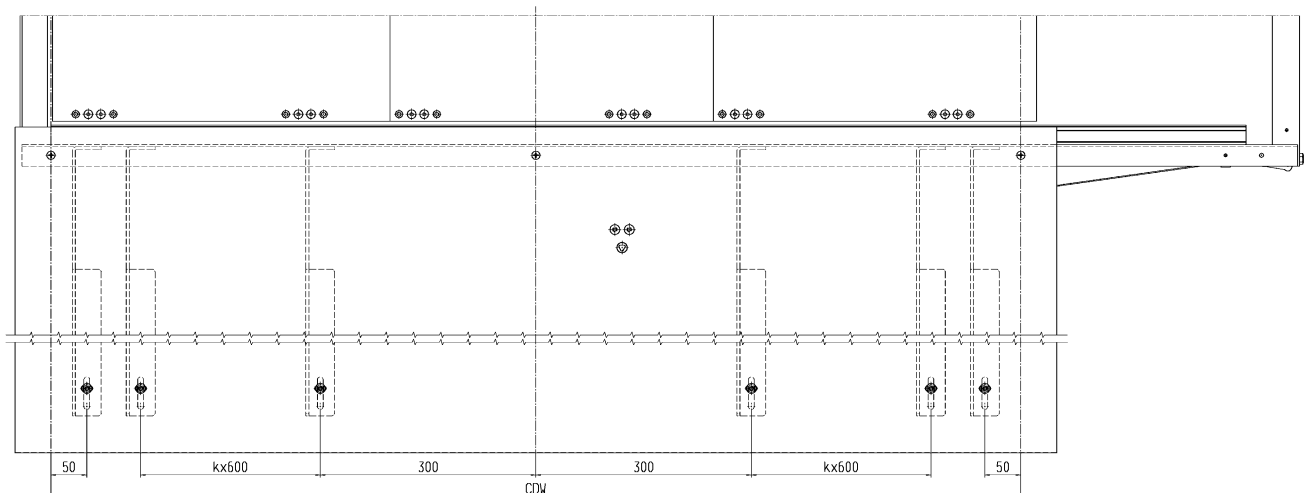
ER: Emergency release
 CDW: Clear door width 1050 – 4400mm
 CDH: Clear door height 2000 – 4500mm
 TD: Car door depth 139mm
 TWR/TWL: Transom width right/left TB/6+35 – by order
 Look the different dimensions for explosion proof: 8200 3003 446
 Subject to alterations!

Fixing chart and the number of the toe guard support profiles TTK 25/31

when: $700 < CDW \leq 1300$
 $1900 < CDW \leq 2500$
 $3100 < CDW \leq 3700$
 $4300 < CDW \leq 4400$



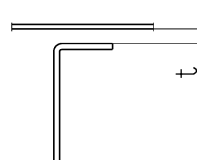
when: $1300 < CDW \leq 1900$
 $2500 < CDW \leq 3100$
 $3700 < CDW \leq 4300$



number of the toe guard support profiles:

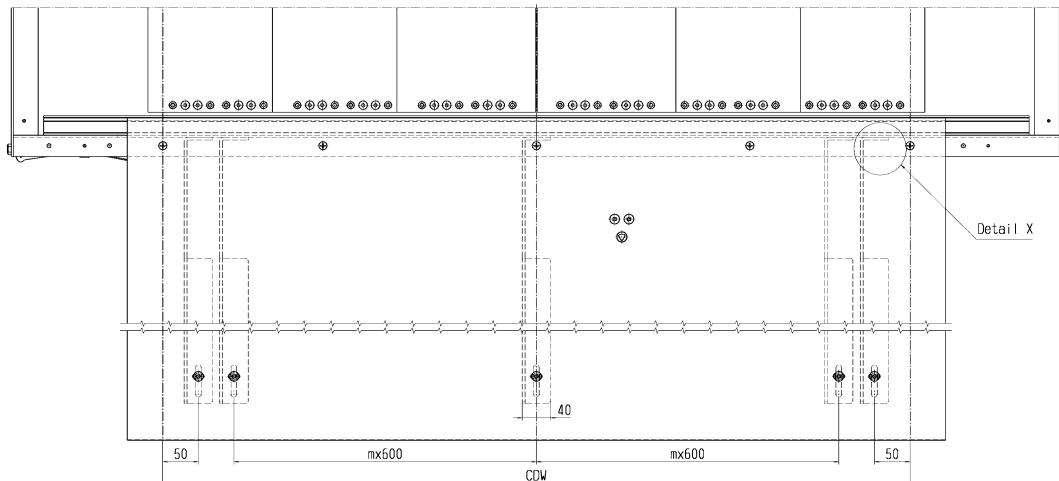
2 when $600 \leq CDW \leq 700$
3 when $700 < CDW \leq 1300$
4 when $1300 < CDW \leq 1900$
5 when $1900 < CDW \leq 2500$

Detail X
Material thickness sill support
 $t \leq 10\text{mm}$

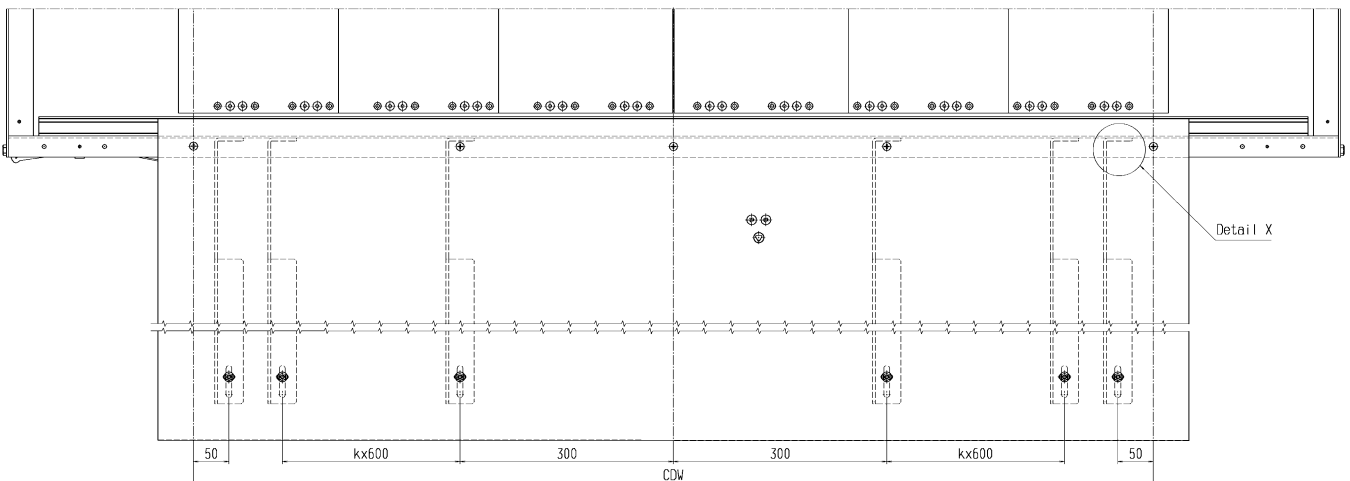


Fixing chart and the number of the toe guard support profiles TTK 28/32, STK 26

when: $700 < CDW \leq 1300$
 $1900 < CDW \leq 2500$
 $3100 < CDW \leq 3700$
 $4300 < CDW \leq 4400$



when: $1300 < CDW \leq 1900$
 $2500 < CDW \leq 3100$
 $3700 < CDW \leq 4300$

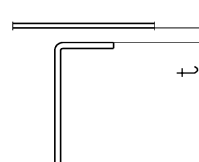


number of the toe guard support profiles:

2 when $600 \leq TB \leq 700$
3 when $700 < TB \leq 1300$
4 when $1300 < TB \leq 1900$
5 when $1900 < TB \leq 2500$
6 when $2500 < TB \leq 3100$
7 when $3100 < TB \leq 3700$
8 when $3700 < TB \leq 4300$
9 when $4300 < TB \leq 4400$

Detail X

Material thickness sill support
 $t \leq 10\text{mm}$



Fixing chart light curtain moveable TTK 25 K-2-R/L / TTK 31 K-3-R/L

